

КАТАЛОГ ПРОДУКЦИИ



Архангельск (8182)63-90-72
Астана (7172)727-132
Астрахань (8512)99-46-04
Барнаул (3852)73-04-60
Белгород (4722)40-23-64
Брянск (4832)59-03-52
Владивосток (423)249-28-31
Волгоград (844)278-03-48
Вологда (8172)26-41-59
Воронеж (473)204-51-73
Екатеринбург (343)384-55-89

Иваново (4932)77-34-06
Ижевск (3412)26-03-58
Иркутск (395)279-98-46
Казань (843)206-01-48
Калининград (4012)72-03-81
Калуга (4842)92-23-67
Кемерово (3842)65-04-62
Киров (8332)68-02-04
Краснодар (861)203-40-90
Красноярск (391)204-63-61
Курск (4712)77-13-04
Липецк (4742)52-20-81

Магнитогорск (3519)55-03-13
Москва (495)268-04-70
Мурманск (8152)59-64-93
Набережные Челны (8552)20-53-41
Нижний Новгород (831)429-08-12
Новокузнецк (3843)20-46-81
Новосибирск (383)227-86-73
Омск (3812)21-46-40
Орел (4862)44-53-42
Оренбург (3532)37-68-04
Пенза (8412)22-31-16

Пермь (342)205-81-47
Ростов-на-Дону (863)308-18-15
Рязань (4912)46-61-64
Самара (846)206-03-16
Санкт-Петербург (812)309-46-40
Саратов (845)249-38-78
Севастополь (8692)22-31-93
Симферополь (3652)67-13-56
Смоленск (4812)29-41-54
Сочи (862)225-72-31
Ставрополь (8652)20-65-13

Сургут (3462)77-98-35
Тверь (4822)63-31-35
Томск (3822)98-41-53
Тула (4872)74-02-29
Тюмень (3452)66-21-18
Ульяновск (8422)24-23-59
Уфа (347)229-48-12
Хабаровск (4212)92-98-04
Челябинск (351)202-03-61
Череповец (8202)49-02-64
Ярославль (4852)69-52-93

Киргизия (996)312-96-26-47 Казахстан (772)734-952-31 Таджикистан (992)427-82-92-69



3 - 17	CONSERVATORS
18 - 22	CHEST FREEZERS
23 - 25	ENERGY EFFICIENT CHEST FREEZERS
26 - 28	ENERGY EFFICIENT UPRIGHT FREEZERS
29 - 32	UPRIGHT FREEZERS
33 - 35	CHEST BOTTLE COOLERS
36 - 38	COUNTER TOP BOTTLE COOLERS
39 - 40	CAN COOLERS OPEN TOP COOLERS
41 - 52	SINGLE-DOUBLE DOOR BOTTLE COOLERS
53 - 58	PREMIUM COOLERS
59 - 61	SUB-ZERO BOTTLE COOLERS
62 - 63	WINE COOLERS
64 - 66	OPEN FRONT COOLERS
67 - 91	SUPERMARKET FREEZERS-COOLERS
92 - 93	POOL TYPE SHOWCASES
94 - 98	ICE CREAM SHOWCASES
99 - 102	COLD BEVERAGE DISPENSERS
103-105	PASTRY DISPLAY CABINETS
106-108	ICE MACHINES
109-110	WATER DISPENSER



index

CONSERVATORS

CONSERVATORS



UDD 100 SC

Temperature range °C	-18/-23
Climate Class	7
Gross/Net Volume (l)	117/93
Gross/Net Weight (kg)	43/35
Dimensions WxDxH (mm)	
Internal	450x450x520
External	568x568x897
With Packing	600x600x970
Loadability (pcs)	
20ft Dc	54
40ft Dc	114
80 m ³ Truck	264
Shelves/Baskets (pcs)	1
Input Power (W)	193
Energy Cons. (kWh/24h)	2,68
Type of cooling	Mechanical
Power Supply (V/Hz)	230/50
Refrigerant (Std/opt)	R404A
Noise Level (dB(A))	48

UDD 200 SC

Temperature range °C	-18/-23
Climate Class	5
Gross/Net Volume (l)	194/149
Gross/Net Weight (kg)	58/47
Dimensions WxDxH (mm)	
Internal	600x510x715
External	719x629x892
With Packing	800x750x880
Loadability (pcs)	
20ft Dc	42
40ft Dc	88
80 m ³ Truck	162
Shelves/Baskets (pcs)	1
Input Power (W)	145/98
Energy Cons. (kWh/24h)	1,94/1,321
Type of cooling	Mechanical
Power Supply (V/Hz)	230/50
Refrigerant (Std/opt)	R404A/R600a
Noise Level (dB(A))	48

UDD 300 SC

Temperature range °C	-18/-23
Climate Class	5
Gross/Net Volume (l)	300/234
Gross/Net Weight (kg)	70/56
Dimensions WxDxH (mm)	
Internal	890x510x715
External	1009x629x892
With Packing	1100x750x880
Loadability (pcs)	
20ft Dc	30
40ft Dc	64
80 m ³ Truck	108
Shelves/Baskets (pcs)	1
Input Power (W)	292/119
Energy Cons. (kWh/24h)	3,848/1,48
Type of cooling	Mechanical
Power Supply (V/Hz)	230/50
Refrigerant (Std/opt)	R404A/R290
Noise Level (dB(A))	48

CONSERVATORS



UDD 400 SC

Temperature range °C	-18/-23
Climate Class	5
Gross/Net Volume (l)	407/319
Gross/Net Weight (kg)	80/65
Dimensions WxDxH (mm)	
Internal	1180x510x715
External	1298x629x892
With Packing	1400x750x880
Loadability (pcs)	
20ft Dc	24
40ft Dc	50
80 m ³ Truck	84
Shelves/Baskets (pcs)	2
Input Power (W)	366/141
Energy Cons. (kWh/24h)	4,4/1,93
Type of cooling	Mechanical
Power Supply (V/Hz)	230/50
Refrigerant (Std/opt)	R404A/R290
Noise Level (dB(A))	49

UDD 500 SC

Temperature range °C	-18/-23
Climate Class	5
Gross/Net Volume (l)	498/392
Gross/Net Weight (kg)	101/85
Dimensions WxDxH (mm)	
Internal	1430x510x715
External	1548x629x892
With Packing	1640x750x880
Loadability (pcs)	
20ft Dc	20
40ft Dc	44
80 m ³ Truck	75
Shelves/Baskets (pcs)	2
Input Power (W)	287/191
Energy Cons. (kWh/24h)	4,17/2,39
Type of cooling	Mechanical
Power Supply (V/Hz)	230/50
Refrigerant (Std/opt)	R404A/R290
Noise Level (dB(A))	49

UDD 550 SC

Temperature range °C	-18/-23
Climate Class	5
Gross/Net Volume (l)	572/451
Gross/Net Weight (kg)	114/96
Dimensions WxDxH (mm)	
Internal	1630x510x715
External	1750x629x892
With Packing	1845x750x880
Loadability (pcs)	
20ft Dc	18
40ft Dc	38
80 m ³ Truck	63
Shelves/Baskets (pcs)	3
Input Power (W)	330/273
Energy Cons. (kWh/24h)	4,88/3,79
Type of cooling	Mechanical
Power Supply (V/Hz)	230/50
Refrigerant (Std/opt)	R404A/R290
Noise Level (dB(A))	49

CONSERVATORS



UDD 600 SC

Temperature range °C	-18/-23
Climate Class	5
Gross/Net Volume (l)	682/539
Gross/Net Weight (kg)	120/99
Dimensions WxDxH (mm)	
Internal	1930x510x715
External	2055x629x892
With Packing	2150x750x880
Loadability (pcs)	
20ft Dc	16
40ft Dc	32
80 m³ Truck	54
Shelves/Baskets (pcs)	3
Input Power (W)	364/292
Energy Cons. (kWh/24h)	5,24/3,57
Type of cooling	Mechanical
Power Supply (V/Hz)	230/50
Refrigerant (Std/opt)	R404A/R290
Noise Level (dB(A))	49

UDD 100 SCE

Temperature range °C	-18/-23
Climate Class	7
Gross/Net Volume (l)	103/77
Gross/Net Weight (kg)	49/41
Dimensions WxDxH (mm)	
Internal	450x450x490/385
External	568x568x897/777
With Packing	610x610x970
Loadability (pcs)	
20ft Dc	54
40ft Dc	114
80 m³ Truck	264
Shelves/Baskets (pcs)	1
Input Power (W)	80
Energy Cons. (kWh/24h)	1,67
Type of cooling	Mechanical
Power Supply (V/Hz)	230/50
Refrigerant (Std/opt)	R404A
Noise Level (dB(A))	48

UDD 200 SCE

Temperature range °C	-18/-23
Climate Class	7
Gross/Net Volume (l)	109/146
Gross/Net Weight (kg)	57/45
Dimensions WxDxH (mm)	
Internal	600x500x708/610
External	719x615x950/832
With Packing	740x750x940
Loadability (pcs)	
20ft Dc	48
40ft Dc	102
80 m³ Truck	114
Shelves/Baskets (pcs)	1
Input Power (W)	183/86
Energy Cons. (kWh/24h)	2,28/1,3
Type of cooling	Mechanical
Power Supply (V/Hz)	230/50
Refrigerant (Std/opt)	R404A/R600a
Noise Level (dB(A))	48

CONSERVATORS



UDD 300 SCE

Temperature range °C	-18/-23
Climate Class	7
Gross/Net Volume (l)	293/229
Gross/Net Weight (kg)	70/56
Dimensions WxDxH (mm)	
Internal	890x500x708/610
External	1009x615x950/832
With Packing	1100x750x940
Loadability (pcs)	
20ft Dc	32
40ft Dc	68
80 m³ Truck	76
Shelves/Baskets (pcs)	1
Input Power (W)	337/165
Energy Cons. (kWh/24h)	5,58/2,69
Type of cooling	Mechanical
Power Supply (V/Hz)	230/50
Refrigerant (Std/opt)	R404A/R290
Noise Level (dB(A))	48

UDD 400 SCE

Temperature range °C	-18/-23
Climate Class	7
Gross/Net Volume (l)	352/325
Gross/Net Weight (kg)	81/65
Dimensions WxDxH (mm)	
Internal	1180x500x708/610
External	1298x615x950/832
With Packing	1400x750x940
Loadability (pcs)	
20ft Dc	24
40ft Dc	50
80 m³ Truck	60
Shelves/Baskets (pcs)	2
Input Power (W)	298/168
Energy Cons. (kWh/24h)	4/2,64
Type of cooling	Mechanical
Power Supply (V/Hz)	230/50
Refrigerant (Std/opt)	R404A/R290
Noise Level (dB(A))	49

UDD 500 SCE

Temperature range °C	-18/-23
Climate Class	7
Gross/Net Volume (l)	427/385
Gross/Net Weight (kg)	96/79
Dimensions WxDxH (mm)	
Internal	1430x500x708/610
External	1548x615x950/832
With Packing	1640x750x940
Loadability (pcs)	
20ft Dc	20
40ft Dc	42
80 m³ Truck	75
Shelves/Baskets (pcs)	2
Input Power (W)	400
Energy Cons. (kWh/24h)	5,2
Type of cooling	Mechanical
Power Supply (V/Hz)	230/50
Refrigerant (Std/opt)	R404A/R290
Noise Level (dB(A))	49

CONSERVATORS



UDD 550 SCE

Temperature range °C	-18/-23
Climate Class	7
Gross/Net Volume (l)	488/398
Gross/Net Weight (kg)	114/96
Dimensions WxDxH (mm)	
Internal	1630x500x708/610
External	1750x615x950/832
With Packing	1845x750x940
Loadability (pcs)	
20ft Dc	18
40ft Dc	40
80 m³ Truck	1
Shelves/Baskets (pcs)	2
Input Power (W)	420
Energy Cons. (kWh/24h)	6,8
Type of cooling	Mechanical
Power Supply (V/Hz)	230/50
Refrigerant (Std/opt)	R404A/R290
Noise Level (dB(A))	49

UDD 100 SCB

Temperature range °C	-18/-23
Climate Class	5
Gross/Net Volume (l)	117/93
Gross/Net Weight (kg)	43/35
Dimensions WxDxH (mm)	
Internal	450x450x520
External	568x568x897
With Packing	600x600x970
Loadability (pcs)	
20ft Dc	54
40ft Dc	114
80 m³ Truck	264
Shelves/Baskets (pcs)	1
Input Power (W)	80
Energy Cons. (kWh/24h)	1,001
Type of cooling	Mechanical
Power Supply (V/Hz)	230/50
Refrigerant (Std/opt)	R600a
Noise Level (dB(A))	48

UDD 200 SCB

Temperature range °C	-18/-23
Climate Class	5
Gross/Net Volume (l)	194/149
Gross/Net Weight (kg)	58/47
Dimensions WxDxH (mm)	
Internal	600x510x715
External	719x629x892
With Packing	800x750x960
Loadability (pcs)	
20ft Dc	42
40ft Dc	92
80 m³ Truck	108
Shelves/Baskets (pcs)	1
Input Power (W)	190/98
Energy Cons. (kWh/24h)	2,70/1,32
Type of cooling	Mechanical
Power Supply (V/Hz)	230/50
Refrigerant (Std/opt)	R404A/R600a
Noise Level (dB(A))	48

CONSERVATORS



UDD 300 SCB

Temperature range °C	-18/-23
Climate Class	5
Gross/Net Volume (l)	300/234
Gross/Net Weight (kg)	70/56
Dimensions WxDxH (mm)	
Internal	890x510x715
External	1009x629x892
With Packing	1100x750x880
Loadability (pcs)	
20ft Dc	30
40ft Dc	64
80 m³ Truck	108
Shelves/Baskets (pcs)	1
Input Power (W)	254/141
Energy Cons. (kWh/24h)	3,848/1,48
Type of cooling	Mechanical
Power Supply (V/Hz)	230/50
Refrigerant (Std/opt)	R404A/R290
Noise Level (dB(A))	49

UDD 400 SCB

Temperature range °C	-18/-23
Climate Class	5
Gross/Net Volume (l)	407/319
Gross/Net Weight (kg)	80/65
Dimensions WxDxH (mm)	
Internal	1180x510x715
External	1298x629x892
With Packing	1400x750x880
Loadability (pcs)	
20ft Dc	24
40ft Dc	50
80 m³ Truck	84
Shelves/Baskets (pcs)	2
Input Power (W)	254/141
Energy Cons. (kWh/24h)	3,85/1,93
Type of cooling	Mechanical
Power Supply (V/Hz)	230/50
Refrigerant (Std/opt)	R404A/R290
Noise Level (dB(A))	49

UDD 500 SCB

Temperature range °C	-18/-23
Climate Class	5
Gross/Net Volume (l)	491/430
Gross/Net Weight (kg)	101/85
Dimensions WxDxH (mm)	
Internal	1430x510x715
External	1548x629x892
With Packing	1640x750x880
Loadability (pcs)	
20ft Dc	20
40ft Dc	42
80 m³ Truck	72
Shelves/Baskets (pcs)	2
Input Power (W)	292/191
Energy Cons. (kWh/24h)	4,063/2,39
Type of cooling	Mechanical
Power Supply (V/Hz)	230/50
Refrigerant (Std/opt)	R404A/R290
Noise Level (dB(A))	49

CONSERVATORS



UDD 550 SCB

Temperature range °C	-18/-23
Climate Class	5
Gross/Net Volume (l)	572/451
Gross/Net Weight (kg)	114/96
Dimensions WxDxH (mm)	
Internal	1630x510x715
External	1750x629x892
With Packing	1845x750x880
Loadability (pcs)	
20ft Dc	18
40ft Dc	38
80 m³ Truck	63
Shelves/Baskets (pcs)	3
Input Power (W)	330/273
Energy Cons. (kWh/24h)	4,89/3,79
Type of cooling	Mechanical
Power Supply (V/Hz)	230/50
Refrigerant (Std/opt)	R404A/R290
Noise Level (dB(A))	49

UDD 100 SCEB

Temperature range °C	-18/-23
Climate Class	7
Gross/Net Volume (l)	103/77
Gross/Net Weight (kg)	49/41
Dimensions WxDxH (mm)	
Internal	450x450x490/385
External	568x568x897/777
With Packing	600x600x970
Loadability (pcs)	
20ft Dc	54
40ft Dc	114
80 m³ Truck	264
Shelves/Baskets (pcs)	1
Input Power (W)	716/150
Energy Cons. (kWh/24h)	1,80/1,67
Type of cooling	Mechanical
Power Supply (V/Hz)	230/50
Refrigerant (Std/opt)	R404A/R600a
Noise Level (dB(A))	48

UDD 200 SCEB

Temperature range °C	-18/-23
Climate Class	7
Gross/Net Volume (l)	146/109
Gross/Net Weight (kg)	57/45
Dimensions WxDxH (mm)	
Internal	600x500x708/610
External	719x615x950/829
With Packing	800x750x940
Loadability (pcs)	
20ft Dc	42
40ft Dc	88
80 m³ Truck	162
Shelves/Baskets (pcs)	1
Input Power (W)	169/86
Energy Cons. (kWh/24h)	1,96/1,3
Type of cooling	Mechanical
Power Supply (V/Hz)	230/50
Refrigerant (Std/opt)	R404A/R600a
Noise Level (dB(A))	48

CONSERVATORS



UDD 300 SCEB

Temperature range °C	-18/-23
Climate Class	7
Gross/Net Volume (l)	293,5/229
Gross/Net Weight (kg)	70/56
Dimensions WxDxH (mm)	
Internal	890x500x708/610
External	1009x615x950/829
With Packing	1100x750x940
Loadability (pcs)	
20ft Dc	30
40ft Dc	64
80 m³ Truck	108
Shelves/Baskets (pcs)	1
Input Power (W)	337/157
Energy Cons. (kWh/24h)	5,58/2,23
Type of cooling	Mechanical
Power Supply (V/Hz)	230/50
Refrigerant (Std/opt)	R404A/R290
Noise Level (dB(A))	49

UDD 400 SCEB

Temperature range °C	-18/-23
Climate Class	7
Gross/Net Volume (l)	350/296
Gross/Net Weight (kg)	81/65
Dimensions WxDxH (mm)	
Internal	1180x500x708/610
External	1298x615x950/829
With Packing	1400x750x940
Loadability (pcs)	
20ft Dc	24
40ft Dc	50
80 m³ Truck	84
Shelves/Baskets (pcs)	2
Input Power (W)	300/168
Energy Cons. (kWh/24h)	4,9/2,64
Type of cooling	Mechanical
Power Supply (V/Hz)	230/50
Refrigerant (Std/opt)	R404A/R290
Noise Level (dB(A))	48

UDD 500 SCEB

Temperature range °C	-18/-23
Climate Class	7
Gross/Net Volume (l)	427/398
Gross/Net Weight (kg)	96/79
Dimensions WxDxH (mm)	
Internal	1430x500x708/610
External	1548x615x950/829
With Packing	1640x750x940
Loadability (pcs)	
20ft Dc	20
40ft Dc	42
80 m³ Truck	72
Shelves/Baskets (pcs)	2
Input Power (W)	348/276
Energy Cons. (kWh/24h)	5,24/3,76
Type of cooling	Mechanical
Power Supply (V/Hz)	230/50
Refrigerant (Std/opt)	R404A/R290
Noise Level (dB(A))	49

CONSERVATORS



UDD 550 SCEB

Temperature range °C	-18/-23
Climate Class	7
Gross/Net Volume (l)	488/385
Gross/Net Weight (kg)	114/96
Dimensions WxDxH (mm)	
Internal	1630x4500x708/610
External	1750x615x950/829
With Packing	1845x750x940
Loadability (pcs)	
20ft Dc	18
40ft Dc	38
80 m ³ Truck	63
Shelves/Baskets (pcs)	2
Input Power (W)	359/239
Energy Cons. (kWh/24h)	6,01/3,96
Type of cooling	Mechanical
Power Supply (V/Hz)	230/50
Refrigerant (Std/opt)	R404A/R290
Noise Level (dB(A))	49

UDD 200 SCN

Temperature range °C	-18/-23
Climate Class	5
Gross/Net Volume (l)	187/132
Gross/Net Weight (kg)	63/52
Dimensions WxDxH (mm)	
Internal	600x510x576
External	740x650x890
With Packing	800x670x940
Loadability (pcs)	
20ft Dc	42
40ft Dc	84
80 m ³ Truck	
Shelves/Baskets (pcs)	1
Input Power (W)	89
Energy Cons. (kWh/24h)	1
Type of cooling	Mechanical
Power Supply (V/Hz)	230/50
Refrigerant (Std/opt)	R600a
Noise Level (dB(A))	48

UDD 300 SCN

Temperature range °C	-18/-23
Climate Class	5
Gross/Net Volume (l)	290/209
Gross/Net Weight (kg)	76/62
Dimensions WxDxH (mm)	
Internal	890x510x576
External	1030x650x890
With Packing	1040x670x940
Loadability (pcs)	
20ft Dc	32
40ft Dc	68
80 m ³ Truck	120
Shelves/Baskets (pcs)	1
Input Power (W)	204/132
Energy Cons. (kWh/24h)	2,56/1,64
Type of cooling	Mechanical
Power Supply (V/Hz)	230/50
Refrigerant (Std/opt)	R404A/R290
Noise Level (dB(A))	49

CONSERVATORS



UDD 400 SCN

Temperature range °C	-18/-23
Climate Class	5
Gross/Net Volume (l)	394/286
Gross/Net Weight (kg)	87/72
Dimensions WxDxH (mm)	
Internal	1180x510x576
External	1320x650x890
With Packing	1330x670x940
Loadability (pcs)	
20ft Dc	24
40ft Dc	50
80 m³ Truck	90
Shelves/Baskets (pcs)	2
Input Power (W)	222/137
Energy Cons. (kWh/24h)	2,79/1,8
Type of cooling	Mechanical
Power Supply (V/Hz)	230/50
Refrigerant (Std/opt)	R404A/R290
Noise Level (dB(A))	48

UDD 500 SCN

Temperature range °C	-18/-23
Climate Class	5
Gross/Net Volume (l)	483/352
Gross/Net Weight (kg)	122/110
Dimensions WxDxH (mm)	
Internal	1430x510x576
External	1570x650x890
With Packing	1580x670x940
Loadability (pcs)	
20ft Dc	20
40ft Dc	44
80 m³ Truck	75
Shelves/Baskets (pcs)	2
Input Power (W)	268/168
Energy Cons. (kWh/24h)	3,65/2,45
Type of cooling	Mechanical
Power Supply (V/Hz)	230/50
Refrigerant (Std/opt)	R404A/R290
Noise Level (dB(A))	48

UDD 100 SCEBN

Temperature range °C	-18/-23
Climate Class	7
Gross/Net Volume (l)	152/117
Gross/Net Weight (kg)	56/47
Dimensions WxDxH (mm)	
Internal	510x515x590
External	645x650x807/940
With Packing	700x700x1000
Loadability (pcs)	
20ft Dc	48
40ft Dc	102
80 m³ Truck	114
Shelves/Baskets (pcs)	1
Input Power (W)	190/71
Energy Cons. (kWh/24h)	2,5/0,91
Type of cooling	Mechanical
Power Supply (V/Hz)	230/50
Refrigerant (Std/opt)	R404A/R600a
Noise Level (dB(A))	48

CONSERVATORS



UDD 200 SCEBN

Temperature range °C	-18/-23
Climate Class	7
Gross/Net Volume (l)	180/132
Gross/Net Weight (kg)	59/51
Dimensions WxDxH (mm)	
Internal	600x510x734/607
External	740x650x824/697
With Packing	820x760x885
Loadability (pcs)	
20ft Dc	42
40ft Dc	84
80 m ³ Truck	
Shelves/Baskets (pcs)	1
Input Power (W)	93
Energy Cons. (kWh/24h)	1,01/
Type of cooling	Mechanical
Power Supply (V/Hz)	230/50
Refrigerant (Std/opt)	R404A/R600a
Noise Level (dB(A))	48

UDD 300 SCEBN

Temperature range °C	-18/-23
Climate Class	7
Gross/Net Volume (l)	280/209
Gross/Net Weight (kg)	76/62
Dimensions WxDxH (mm)	
Internal	890x510x734/607
External	1030x650x824/697
With Packing	1110x760x885
Loadability (pcs)	
20ft Dc	28
40ft Dc	64
80 m ³ Truck	108
Shelves/Baskets (pcs)	1
Input Power (W)	243/150
Energy Cons. (kWh/24h)	2,8/1,59
Type of cooling	Mechanical
Power Supply (V/Hz)	230/50
Refrigerant (Std/opt)	R404A/R290
Noise Level (dB(A))	49

UDD 400 SCEBN

Temperature range °C	-18/-23
Climate Class	7
Gross/Net Volume (l)	380/286
Gross/Net Weight (kg)	87/72
Dimensions WxDxH (mm)	
Internal	1180x510x734/607
External	1320x650x824/697
With Packing	1410x760x885
Loadability (pcs)	
20ft Dc	24
40ft Dc	50
80 m ³ Truck	84
Shelves/Baskets (pcs)	2
Input Power (W)	300/140
Energy Cons. (kWh/24h)	4,76/2,48
Type of cooling	Mechanical
Power Supply (V/Hz)	230/50
Refrigerant (Std/opt)	R404A/R290
Noise Level (dB(A))	48

CONSERVATORS



UDD 500 SCEBN

Temperature range °C	-18/-23
Climate Class	7
Gross/Net Volume (l)	466/352
Gross/Net Weight (kg)	122/110
Dimensions WxDxH (mm)	
Internal	1430x510x734/607
External	1570x650x824/697
With Packing	1650x760x885
Loadability (pcs)	
20ft Dc	14
40ft Dc	30
80 m³ Truck	72
Shelves/Baskets (pcs)	2
Input Power (W)	400/300
Energy Cons. (kWh/24h)	5,85/3,21
Type of cooling	Mechanical
Power Supply (V/Hz)	230/50
Refrigerant (Std/opt)	R404A/R290
Noise Level (dB(A))	48

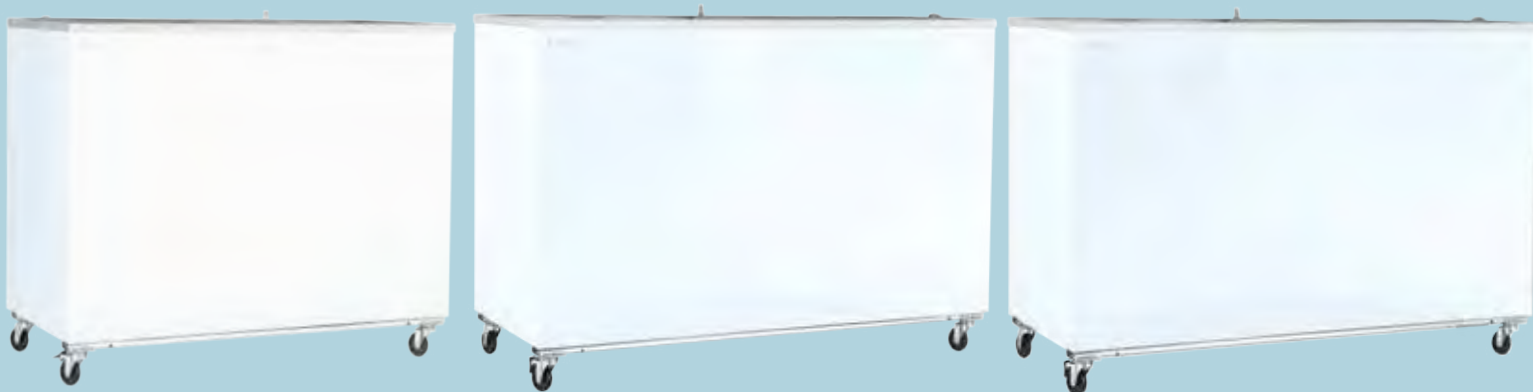
UDD 205 SC

Temperature range °C	-18/-23
Climate Class	5
Gross/Net Volume (l)	210/166
Gross/Net Weight (kg)	58/47
Dimensions WxDxH (mm)	
Internal	600x510x715
External	719x629x950
With Packing	800x750x960
Loadability (pcs)	
20ft Dc	42
40ft Dc	88
80 m³ Truck	162
Shelves/Baskets (pcs)	1
Input Power (W)	98
Energy Cons. (kWh/24h)	1,32
Type of cooling	Mechanical
Power Supply (V/Hz)	230/50
Refrigerant (Std/opt)	R600a
Noise Level (dB(A))	48

UDD 305 SC

Temperature range °C	-18/-23
Climate Class	5
Gross/Net Volume (l)	324/258
Gross/Net Weight (kg)	70/56
Dimensions WxDxH (mm)	
Internal	890x510x715
External	1009x629x950
With Packing	1100x750x960
Loadability (pcs)	
20ft Dc	30
40ft Dc	64
80 m³ Truck	108
Shelves/Baskets (pcs)	1
Input Power (W)	292/119
Energy Cons. (kWh/24h)	3,84/1,48
Type of cooling	Mechanical
Power Supply (V/Hz)	230/50
Refrigerant (Std/opt)	R404A/R290
Noise Level (dB(A))	48

CONSERVATORS



UDD 405 SC

Temperature range °C	-18/-23
Climate Class	5
Gross/Net Volume (l)	438/346
Gross/Net Weight (kg)	80/65
Dimensions WxDxH (mm)	
Internal	1180x510x715
External	1298x629x950
With Packing	1400x750x960
Loadability (pcs)	
20ft Dc	24
40ft Dc	50
80 m³ Truck	84
Shelves/Baskets (pcs)	2
Input Power (W)	254/141
Energy Cons. (kWh/24h)	4,06/1,93
Type of cooling	Mechanical
Power Supply (V/Hz)	230/50
Refrigerant (Std/opt)	R404A/R290
Noise Level (dB(A))	49

UDD 505 SC

Temperature range °C	-18/-23
Climate Class	5
Gross/Net Volume (l)	536/432
Gross/Net Weight (kg)	101/85
Dimensions WxDxH (mm)	
Internal	1430x510x715
External	1548x629x950
With Packing	1640x750x960
Loadability (pcs)	
20ft Dc	20
40ft Dc	42
80 m³ Truck	72
Shelves/Baskets (pcs)	2
Input Power (W)	292/191
Energy Cons. (kWh/24h)	3,84/2,39
Type of cooling	Mechanical
Power Supply (V/Hz)	230/50
Refrigerant (Std/opt)	R404A/R290
Noise Level (dB(A))	49

UDD 555 SC

Temperature range °C	-18/-23
Climate Class	5
Gross/Net Volume (l)	615/497
Gross/Net Weight (kg)	114/96
Dimensions WxDxH (mm)	
Internal	1630x510x715
External	1750x629x950
With Packing	1845x750x960
Loadability (pcs)	
20ft Dc	18
40ft Dc	38
80 m³ Truck	63
Shelves/Baskets (pcs)	3
Input Power (W)	330/273
Energy Cons. (kWh/24h)	4,88/3,79
Type of cooling	Mechanical
Power Supply (V/Hz)	230/50
Refrigerant (Std/opt)	R404A/R290
Noise Level (dB(A))	49

CONSERVATORS



UDD 805 SC

Temperature range °C	-18/-23
Climate Class	5
Gross/Net Volume (l)	912/738
Gross/Net Weight (kg)	
Dimensions WxDxH (mm)	
Internal	2380x510x715
External	2500x629x950
With Packing	2535x750x960
Loadability (pcs)	
20ft Dc	12
40ft Dc	24
80 m³ Truck	45
Shelves/Baskets (pcs)	10
Input Power (W)	352
Energy Cons. (kWh/24h)	6,24
Type of cooling	Mechanical
Power Supply (V/Hz)	230/50
Refrigerant (Std/opt)	R290
Noise Level (dB(A))	50



UDD 605 SC

Temperature range °C	-18/-23
Climate Class	5
Gross/Net Volume (l)	682/539
Gross/Net Weight (kg)	120/99
Dimensions WxDxH (mm)	
Internal	1930x510x715
External	2055x629x950
With Packing	2150x750x960
Loadability (pcs)	
20ft Dc	16
40ft Dc	32
80 m³ Truck	54
Shelves/Baskets (pcs)	3
Input Power (W)	364/292
Energy Cons. (kWh/24h)	5,24/3,57
Type of cooling	Mechanical
Power Supply (V/Hz)	230/50
Refrigerant (Std/opt)	R404A/R290
Noise Level (dB(A))	49

CHEST FREEZERS

CHEST FREEZERS



UDD 160 BK

Temperature range °C	-18/-23
Climate Class	5
Gross/Net Volume (l)	122/120
Gross/Net Weight (kg)	39/34
Dimensions WxDxH (mm)	
Internal	440x440x515/755
External	550x595x895
With Packing	635x670x995
Loadability (pcs)	
20ft Dc	54
40ft Dc	108
80 m³ Truck	
Shelves/Baskets (pcs) (Optional)	1
Input Power (W)	150
Energy Cons. (kWh/24h)	1,12/0,73
Type of cooling	Mechanical
Power Supply (V/Hz)	230/50
Refrigerant (Std/opt)	R134a/R600a
Noise Level (dB(A))	45,1



UDD 260 BK

Temperature range °C	-18/-23
Climate Class	5
Gross/Net Volume (l)	190/183
Gross/Net Weight (kg)	43/39,5
Dimensions WxDxH (mm)	
Internal	610x480x475/725
External	734x695x945
With Packing	820x730x995
Loadability (pcs)	
20ft Dc	42
40ft Dc	88
80 m³ Truck	
Shelves/Baskets (pcs) (Optional)	1
Input Power (W)	150
Energy Cons. (kWh/24h)	1,12/0,87
Type of cooling	Mechanical
Power Supply (V/Hz)	230/50
Refrigerant (Std/opt)	R134a/R600a
Noise Level (dB(A))	47,5



UDD 360 BK

Temperature range °C	-18/-23
Climate Class	5
Gross/Net Volume (l)	280/270
Gross/Net Weight (kg)	50/46,5
Dimensions WxDxH (mm)	
Internal	860x480x475/725
External	984x695x945
With Packing	1070x730x995
Loadability (pcs)	
20ft Dc	32
40ft Dc	66
80 m³ Truck	
Shelves/Baskets (pcs) (Optional)	1
Input Power (W)	185
Energy Cons. (kWh/24h)	1,6/0,8
Type of cooling	Mechanical
Power Supply (V/Hz)	230/50
Refrigerant (Std/opt)	R134a/R600a
Noise Level (dB(A))	48

CHEST FREEZERS



UDD 460 BK

Temperature range °C	-18/-23
Climate Class	5
Gross/Net Volume (l)	387/373
Gross/Net Weight (kg)	59/55
Dimensions WxDxH (mm)	
Internal	1160x480x475/725
External	1284x695x945
With Packing	1370x730x995
Loadability (pcs)	
20ft Dc	24
40ft Dc	50
80 m ³ Truck	
Shelves/Baskets (pcs) (Optional)	2
Input Power (W)	230
Energy Cons. (kWh/24h)	1,92/1,32
Type of cooling	Mechanical
Power Supply (V/Hz)	230/50
Refrigerant (Std/opt)	R404A/R600a
Noise Level (dB(A))	48,5

UDD 560 BK

Temperature range °C	-18/-23
Climate Class	5
Gross/Net Volume (l)	466/449
Gross/Net Weight (kg)	66/61
Dimensions WxDxH (mm)	
Internal	1380x480x475/725
External	1504x695x945
With Packing	1590x730x995
Loadability (pcs)	
20ft Dc	20
40ft Dc	44
80 m ³ Truck	
Shelves/Baskets (pcs) (Optional)	2
Input Power (W)	230
Energy Cons. (kWh/24h)	1,93/1,5
Type of cooling	Mechanical
Power Supply (V/Hz)	230/50
Refrigerant (Std/opt)	R404A/R600a
Noise Level (dB(A))	48,7

UDD 660 BK

Temperature range °C	-18/-23
Climate Class	5
Gross/Net Volume (l)	567/553
Gross/Net Weight (kg)	73/68
Dimensions WxDxH (mm)	
Internal	1680x480x475/725
External	1840x695x945
With Packing	1890x730x995
Loadability (pcs)	
20ft Dc	18
40ft Dc	36
80 m ³ Truck	
Shelves/Baskets (pcs) (Optional)	3
Input Power (W)	250
Energy Cons. (kWh/24h)	2,2/1,75
Type of cooling	Mechanical
Power Supply (V/Hz)	230/50
Refrigerant (Std/opt)	R404A/R600a
Noise Level (dB(A))	48,8

CHEST FREEZERS



UDD 200 BK

Temperature range °C	-18/-23
Climate Class	5
Gross/Net Volume (l)	196/150
Gross/Net Weight (kg)	58/47
Dimensions WxDxH (mm)	
Internal	600x510x682
External	720x715x903
With Packing	740x750x905
Loadability (pcs)	
20ft Dc	42
40ft Dc	96
80 m³ Truck	162
Shelves/Baskets (pcs) (Optional)	1
Input Power (W)	160/150
Energy Cons. (kWh/24h)	1,92/1,52
Type of cooling	Mechanical
Power Supply (V/Hz)	230/50
Refrigerant (Std/opt)	R134a/R600a
Noise Level (dB(A))	47,5

UDD 300 BK

Temperature range °C	-18/-23
Climate Class	5
Gross/Net Volume (l)	296/283
Gross/Net Weight (kg)	68/57
Dimensions WxDxH (mm)	
Internal	890x510x682
External	1012x715x903
With Packing	1040x750x905
Loadability (pcs)	
20ft Dc	30
40ft Dc	68
80 m³ Truck	117
Shelves/Baskets (pcs) (Optional)	2
Input Power (W)	175
Energy Cons. (kWh/24h)	2,3/1,64
Type of cooling	Mechanical
Power Supply (V/Hz)	230/50
Refrigerant (Std/opt)	R404A/R600a
Noise Level (dB(A))	48

UDD 400 BK

Temperature range °C	-18/-23
Climate Class	5
Gross/Net Volume (l)	401/384
Gross/Net Weight (kg)	84/64,5
Dimensions WxDxH (mm)	
Internal	1298x510x682
External	1302x715x903
With Packing	1330x750x905
Loadability (pcs)	
20ft Dc	24
40ft Dc	54
80 m³ Truck	90
Shelves/Baskets (pcs) (Optional)	2
Input Power (W)	385/140
Energy Cons. (kWh/24h)	4,3/1,96
Type of cooling	Mechanical
Power Supply (V/Hz)	230/50
Refrigerant (Std/opt)	R404A/R600a
Noise Level (dB(A))	48,5

CHEST FREEZERS



UDD 500 BK

Temperature range °C	-18/-23
Climate Class	5
Gross/Net Volume (l)	492/471
Gross/Net Weight (kg)	94/76
Dimensions WxDxH (mm)	
Internal	1430x510x682
External	1552x715x903
With Packing	1585x750x905
Loadability (pcs)	
20ft Dc	20
40ft Dc	44
80 m ³ Truck	75
Shelves/Baskets (pcs) (Optional)	2
Input Power (W)	400
Energy Cons. (kWh/24h)	4,6
Type of cooling	Mechanical
Power Supply (V/Hz)	230/50
Refrigerant (Std/opt)	R404A
Noise Level (dB(A))	48,7

UDD 600 BK

Temperature range °C	-18/-23
Climate Class	5
Gross/Net Volume (l)	675/646
Gross/Net Weight (kg)	118.5/97.5
Dimensions WxDxH (mm)	
Internal	1935x510x682
External	2055x715x903
With Packing	2095x750x905
Loadability (pcs)	
20ft Dc	16
40ft Dc	34
80 m ³ Truck	57
Shelves/Baskets (pcs) (Optional)	3
Input Power (W)	425
Energy Cons. (kWh/24h)	4,9/3,18
Type of cooling	Mechanical
Power Supply (V/Hz)	230/50
Refrigerant (Std/opt)	R404A/R290
Noise Level (dB(A))	48,8

**ENERGY EFFICIENT
CHEST / FREEZERS**

ENERGY EFFICIENT CHEST / FREEZERS



UED 280 A++

"Temperature range °C(Freezer-Chiller-Cooler)*	-15/-25
Climate Class	T
Gross/Net Volume (l)	236/227
Gross/Net Weight (kg)	53/51
Dimensions WxDxH (mm)	
Internal	820x440x455/705
External	984x700x895
With Packing	1010x725x890
Loadability (pcs) *with eps	
20ft Dc	34
40ft Dc	70
80 m³ Truck	117
Shelves/Baskets (pcs) (Optional)	1
Input Power (W)	40
Energy Cons. (kWh/24h)	0,508
Type of cooling	Electronic
Power Supply (V/Hz)	230/50
Refrigerant (Std/opt)	R600a

UED 280 MOR A++

"Temperature range °C(Freezer-Chiller-Cooler)*	-15/-25
Climate Class	T
Gross/Net Volume (l)	236/227
Gross/Net Weight (kg)	53/51
Dimensions WxDxH (mm)	
Internal	820x440x455/705
External	984x700x895
With Packing	1010x725x890
Loadability (pcs) *with eps	
20ft Dc	34
40ft Dc	70
80 m³ Truck	117
Shelves/Baskets (pcs) (Optional)	1
Input Power (W)	40
Energy Cons. (kWh/24h)	0,508
Type of cooling	Electronic
Power Supply (V/Hz)	230/50
Refrigerant (Std/opt)	R600a

UED 280 ANTRASİT A++

"Temperature range °C(Freezer-Chiller-Cooler)*	-15/-25
Climate Class	T
Gross/Net Volume (l)	236/227
Gross/Net Weight (kg)	53/51
Dimensions WxDxH (mm)	
Internal	820x440x455/705
External	984x700x895
With Packing	1010x725x890
Loadability (pcs) *with eps	
20ft Dc	34
40ft Dc	70
80 m³ Truck	117
Shelves/Baskets (pcs) (Optional)	1
Input Power (W)	40
Energy Cons. (kWh/24h)	0,508
Type of cooling	Electronic
Power Supply (V/Hz)	230/50
Refrigerant (Std/opt)	R600a

ENERGY EFFICIENT CHEST / FREEZERS



UED 380 A++

"Temperature range °C(Freezer-Chiller-Cooler)"	-15/-25
Climate Class	T
Gross/Net Volume (l)	330/323
Gross/Net Weight (kg)	63/61
Dimensions WxDxH (mm)	
Internal	1120 x 440 x 455 / 705
External	1284 x 700 x 895
With Packing	1310 x 725 x 890
Loadability (pcs) *with eps	
20ft Dc	24
40ft Dc	54
80 m ³ Truck	90
Shelves/Baskets (pcs) (Optional)	1
Input Power (W)	45
Energy Cons. (kWh/24h)	0,61
Type of cooling	Electronic
Power Supply (V/Hz)	230/50
Refrigerant (Std/opt)	R600a

UED 480 A++

"Temperature range °C(Freezer-Chiller-Cooler)"	-15/-25
Climate Class	T
Gross/Net Volume (l)	402/388
Gross/Net Weight (kg)	71/68
Dimensions WxDxH (mm)	
Internal	1340 x 440 x 455 / 705
External	1504 x 700 x 895
With Packing	1530 x 725 x 890
Loadability (pcs) *with eps	
20ft Dc	22
40ft Dc	46
80 m ³ Truck	78
Shelves/Baskets (pcs) (Optional)	1
Input Power (W)	50
Energy Cons. (kWh/24h)	0,685
Type of cooling	Electronic
Power Supply (V/Hz)	230/50
Refrigerant (Std/opt)	R600a

UED 150 A++

"Temperature range °C(Freezer-Chiller-Cooler)"	0,6
Climate Class	T
Gross/Net Volume (l)	130/126
Gross/Net Weight (kg)	48.5/44.5
Dimensions WxDxH (mm)	
Internal	530 x 400 x 452 / 702
External	734 x 700 x 895
With Packing	760 x 705 x 890
Loadability (pcs) *with eps	
20ft Dc	42
40ft Dc	102
80 m ³ Truck	
Shelves/Baskets (pcs) (Optional)	1
Input Power (W)	35
Energy Cons. (kWh/24h)	0,394
Type of cooling	Electronic
Power Supply (V/Hz)	230/50
Refrigerant (Std/opt)	R600a

**ENERGY EFFICIENT
UPRIGHT FREEZERS**

ENERGY EFFICIENT UPRIGHT FREEZERS



UED 7265 DTK A+

"Temperature range °C (Freezer-Chiller-Cooler)*	-18/-25
Climate Class	T
Gross/Net Volume (l)	265/250
Gross/Net Weight (kg)	72/60
Dimensions WxDxH (mm)	
Internal	432x451x1532
External	595x655x1765
With Packing	680x705x1830
Loadability (pcs) *with eps	
20ft Dc	24
40ft Dc	51
80 m ³ Truck	60
Shelves/Baskets (pcs) (Optional)	7
Input Power (W)	48
Energy Cons. (kWh/24h)	0,758
Type of cooling	Electronic
Power Supply (V/Hz)	230/50
Refrigerant (Std/opt)z	R600a



UED 7266 DTK A++

"Temperature range °C (Freezer-Chiller-Cooler)*	-18/-25
Climate Class	T
Gross/Net Volume (l)	265/258
Gross/Net Weight (kg)	72/60
Dimensions WxDxH (mm)	
Internal	432x451x1532
External	595x655x1765
With Packing	680x705x1830
Loadability (pcs) *with eps	
20ft Dc	24
40ft Dc	51
80 m ³ Truck	60
Shelves/Baskets (pcs) (Optional)	7
Input Power (W)	48
Energy Cons. (kWh/24h)	0,608
Type of cooling	Electronic
Power Supply (V/Hz)	230/50
Refrigerant (Std/opt)z	R600a

ENERGY EFFICIENT UPRIGHT FREEZERS



UED 7266 DTK A++ MOR

"Temperature range °C (Freezer-Chiller-Cooler)"	-18/-25
Climate Class	T
Gross/Net Volume (l)	265/258
Gross/Net Weight (kg)	72/60
Dimensions WxDxH (mm)	
Internal	432x451x1532
External	595x655x1765
With Packing	680x705x1830
Loadability (pcs) *with eps	
20ft Dc	24
40ft Dc	51
80 m³ Truck	60
Shelves/Baskets (pcs) (Optional)	7
Input Power (W)	48
Energy Cons. (kWh/24h)	0,608
Type of cooling	Electronic
Power Supply (V/Hz)	230/50
Refrigerant (Std/opt)z	R600a



UED 7266 DTK A++ ANTRASİT

"Temperature range °C (Freezer-Chiller-Cooler)"	-18/-25
Climate Class	T
Gross/Net Volume (l)	265/258
Gross/Net Weight (kg)	72/60
Dimensions WxDxH (mm)	
Internal	432x451x1532
External	595x655x1765
With Packing	680x705x1830
Loadability (pcs) *with eps	
20ft Dc	24
40ft Dc	51
80 m³ Truck	60
Shelves/Baskets (pcs) (Optional)	7
Input Power (W)	48
Energy Cons. (kWh/24h)	0,608
Type of cooling	Electronic
Power Supply (V/Hz)	230/50
Refrigerant (Std/opt)z	R600a

UPRIGHT FREEZERS

UPRIGHT FREEZERS



UDD 45 DTK

Temperature range °C	-18/-23
Climate Class	3
Gross/Net Volume (l)	46.5/45
Gross/Net Weight (kg)	35.5/31.5
Dimensions WxDxH (mm)	
Internal	460x385x350
External	570x505x485
With Packing	630x570x570
Loadability (pcs)	
20ft Dc	144
40ft Dc	304
80 m³ Truck	336
Shelves/Baskets (pcs)	2
Input Power (W)	150/135
Energy Cons. (kWh/24h)	2,2/1,6
Type of cooling	Mechanical
Power Supply (V/Hz)	230/50
Refrigerant (Std/opt)	R134a/R600a
Noise Level (dB(A))	47



UDD 370 DTK

Temperature range °C	-18/-23
Climate Class	4
Gross/Net Volume (l)	300/270
Gross/Net Weight (kg)	101,5/91
Dimensions WxDxH (mm)	
Internal	475x440x1550
External	595x640x1965
With Packing	665x685x2080
Loadability (pcs)	
20ft Dc	24
40ft Dc	51
80 m³ Truck	60
Shelves/Baskets (pcs)	6
Input Power (W)	720/620
Energy Cons. (kWh/24h)	13/8,6
Type of cooling	Mechanical
Power Supply (V/Hz)	230/50
Refrigerant (Std/opt)	R404/R290
Noise Level (dB(A))	48



UDD 370 DTKL

Temperature range °C	-18/-23
Climate Class	4
Gross/Net Volume (l)	300/270
Gross/Net Weight (kg)	106/96
Dimensions WxDxH (mm)	
Internal	475x440x1550
External	595x600x1965
With Packing	680x685x2100
Loadability (pcs)	
20ft Dc	24
40ft Dc	54
80 m³ Truck	60
Shelves/Baskets (pcs)	6
Input Power (W)	735/635
Energy Cons. (kWh/24h)	13,4/9
Type of cooling	Mechanical
Power Supply (V/Hz)	230/50
Refrigerant (Std/opt)	R404A/R290
Noise Level (dB(A))	48

UPRIGHT FREEZERS



UDD 370 DTK BK

Temperature range °C	-18/-23
Climate Class	4
Gross/Net Volume (l)	300/270
Gross/Net Weight (kg)	79,5/69,8
Dimensions WxDxH (mm)	
Internal	475x440x1550
External	595x640x1840
With Packing	680x710x1950
Loadability (pcs)	
20ft Dc	24
40ft Dc	51
80 m³ Truck	60
Shelves/Baskets (pcs)	6
Input Power (W)	610/510
Energy Cons. (kWh/24h)	7,2/4,9
Type of cooling	Mechanical
Power Supply (V/Hz)	230/50
Refrigerant (Std/opt)	R404A/R290
Noise Level (dB(A))	48



UDD 440 DTKL

Temperature range °C	-18/-23
Climate Class	4
Gross/Net Volume (l)	480/353
Gross/Net Weight (kg)	123/114
Dimensions WxDxH (mm)	
Internal	577x495x1684
External	680x655x2090
With Packing	760x710x2207
Loadability (pcs)	
20ft Dc	24
40ft Dc	51
80 m³ Truck	57
Shelves/Baskets (pcs)	6
Input Power (W)	867
Energy Cons. (kWh/24h)	15,28/11,91
Type of cooling	Mechanical
Power Supply (V/Hz)	230/50
Refrigerant (Std/opt)	R404A/R290
Noise Level (dB(A))	48



UDD 440 DTKLB

Temperature range °C	-18/-23
Climate Class	4
Gross/Net Volume (l)	487/353
Gross/Net Weight (kg)	120/109
Dimensions WxDxH (mm)	
Internal	577x495x1684
External	680x655x2090
With Packing	760x710x2207
Loadability (pcs)	
20ft Dc	24
40ft Dc	51
80 m³ Truck	57
Shelves/Baskets (pcs)	6
Input Power (W)	867
Energy Cons. (kWh/24h)	15,28/11,91
Type of cooling	Mechanical
Power Supply (V/Hz)	230/50
Refrigerant (Std/opt)	R404A/R290
Noise Level (dB(A))	48

UPRIGHT FREEZERS



UDD 440 DTKL NF

Temperature range °C	-18/-23
Climate Class	3
Gross/Net Volume (l)	539/358
Gross/Net Weight (kg)	170/157
Dimensions WxDxH (mm)	
Internal	560x570x1460
External	680x760x2149
With Packing	745x805x2275
Loadability (pcs)	
20ft Dc	21
40ft Dc	42
80 m³ Truck	54
Shelves/Baskets (pcs)	5
Input Power (W)	825/610
Energy Cons. (kWh/24h)	7,68/6,92
Type of cooling	Electronic
Power Supply (V/Hz)	230/50
Refrigerant (Std/opt)	R404A/R290
Noise Level (dB(A))	49



UDD 1600 D3KL NF

Temperature range °C	-18/-23
Climate Class	3
Gross/Net Volume (l)	1252/891
Gross/Net Weight (kg)	333/308
Dimensions WxDxH (mm)	
Internal	1480x568x1518
External	1600x762x2073
With Packing	1675x805x2014
Loadability (pcs)	
20ft Dc	7
40ft Dc	14
80 m³ Truck	24
Shelves/Baskets (pcs)	15
Input Power (W)	1555
Energy Cons. (kWh/24h)	19,58
Type of cooling	Electronic
Power Supply (V/Hz)	230/50
Refrigerant (Std/opt)	R290
Noise Level (dB(A))	49

CHEST BOTTLE COOLERS

CHEST BOTTLE COOLERS



USS 100 SCE

Temperature Range °C	+1/+10
Climate Class	4
Gross/Net Volume (lt)	100/85
Gross/Net Weight (kg)	49/41
Dimensions (WxDxH) (mm)	
Internal	450x450x490/385
External	568x568x897/777
With Packing	685x650x980
Loadability (pc)	
20ft DC	48
40ft DC	108
80 m ³ Truck	120
Shelves/Baskets (pcs)	2
Capacity	
Input Power (W)	240/122
Energy Cons. (kWh/24h)	2,5/1,1
Type of cooling	Mechanical
Power supply (V/Hz)	230/50
Refrigerant	R134a/R600a
Noise Level (dB(A))	44,5



USS 300 SC

Temperature Range °C	+1/+10
Climate Class	4
Gross/Net Volume (lt)	296/255
Gross/Net Weight (kg)	70/56
Dimensions (WxDxH) (mm)	
Internal	890x510x663
External	1009x629x892
With Packing	1100x750x950
Loadability (pc)	
20ft DC	30
40ft DC	64
80 m ³ Truck	72
Shelves/Baskets (pcs)	2
Capacity	
Input Power (W)	340
Energy Cons. (kWh/24h)	3
Type of cooling	Mechanical
Power supply (V/Hz)	230/50
Refrigerant	R134a
Noise Level (dB(A))	47

CHEST BOTTLE COOLERS



USS 300 BY2K

Temperature Range °C	+1/+10
Climate Class	4
Gross/Net Volume (lt)	290/283
Gross/Net Weight (kg)	67/59
Dimensions (WxDxH) (mm)	
Internal	890x510x682
External	1056x665x895
With Packing	1100x750x950
Loadability (pc)	
20ft DC	30
40ft DC	64
80 m³ Truck	72
Shelves/Baskets (pcs)	
Capacity	
Input Power (W)	340
Energy Cons. (kWh/24h)	3
Type of cooling	Mechanical
Power supply (V/Hz)	230/50
Refrigerant	R134a
Noise Level (dB(A))	48



USS 300 BK

Temperature Range °C	+1/+10
Climate Class	4
Gross/Net Volume (lt)	290/283
Gross/Net Weight (kg)	67/59
Dimensions (WxDxH) (mm)	
Internal	890x510x682
External	1056x665x895
With Packing	1100x750x950
Loadability (pc)	
20ft DC	30
40ft DC	64
80 m³ Truck	72
Shelves/Baskets (pcs)	
Capacity	
Input Power (W)	340/105
Energy Cons. (kWh/24h)	3/1,75
Type of cooling	Mechanical
Power supply (V/Hz)	230/50
Refrigerant	R134a/R600a
Noise Level (dB(A))	48

COUNTER TOP BOTTLE COOLERS

COUNTER TOP BOTTLE COOLERS



USS 15 DTKL

Temperature Range °C	+2/+12
Climate Class	4
Gross/Net Volume (lt)	18/17,2
Gross/Net Weight (kg)	20,5/19
Dimensions (WxDxH) (mm)	
Internal	230x250x302
External	295x366x573
With Packing	372x416x650
Loadability (pc)	
20ft DC	252
40ft DC	504
80 m³ Truck	672
Shelves/Baskets (pcs)	1
Capacity	
Input Power (W)	150
Energy Cons. (kWh/24h)	0,78
Type of cooling	Mechanical
Power supply (V/Hz)	230/50
Refrigerant	R134a
Noise Level (dB(A))	48



USS 60 DTKL

Temperature Range °C	+1/+10
Climate Class	4
Gross/Net Volume (lt)	57/45
Gross/Net Weight (kg)	37/32,5
Dimensions (WxDxH) (mm)	
Internal	398x320x442
External	455x475x715
With Packing	530x540x840
Loadability (pc)	
20ft DC	88
40ft DC	176
80 m³ Truck	300
Shelves/Baskets (pcs)	2
Capacity	
Input Power (W)	215
Energy Cons. (kWh/24h)	3,4/2,85
Type of cooling	Mechanical
Power supply (V/Hz)	230/50
Refrigerant	R134a/R600a
Noise Level (dB(A))	48



USS 95 DTKL

Temperature Range °C	+1/+10
Climate Class	4
Gross/Net Volume (lt)	85/55
Gross/Net Weight (kg)	43/37,5
Dimensions (WxDxH) (mm)	
Internal	410x380x550
External	480x520x840
With Packing	560x600x960
Loadability (pc)	
20ft DC	72
40ft DC	160
80 m³ Truck	184
Shelves/Baskets (pcs)	2
Capacity	
Input Power (W)	215
Energy Cons. (kWh/24h)	4,5/3,1
Type of cooling	Mechanical
Power supply (V/Hz)	230/50
Refrigerant	R134a/R600a
Noise Level (dB(A))	48

COUNTER TOP BOTTLE COOLERS



USS 100 DSCL

Temperature Range °C	+1/+10
Climate Class	4
Gross/Net Volume (lt)	100/60
Gross/Net Weight (kg)	51/45,5
Dimensions (WxDxH) (mm)	
Internal	560x260x632
External	650x405x940
With Packing	740x460x1050
Loadability (pc)	
20ft DC	76
40ft DC	160
80 m³ Truck	180
Shelves/Baskets (pcs)	3
Capacity	
Input Power (W)	230/225
Energy Cons. (kWh/24h)	4,6/
Type of cooling	Mechanical
Power supply (V/Hz)	230/50
Refrigerant	R134a/R600a
Noise Level (dB(A))	48



USS 160 DTK

Temperature Range °C	+1/+10
Climate Class	4
Gross/Net Volume (lt)	141/133
Gross/Net Weight (kg)	52/42
Dimensions (WxDxH) (mm)	
Internal	516x414x768
External	595x516x870
With Packing	650x565x1020
Loadability (pc)	
20ft DC	72
40ft DC	144
80 m³ Truck	144
Shelves/Baskets (pcs)	2
Capacity	
Input Power (W)	250
Energy Cons. (kWh/24h)	2/1,68
Type of cooling	Mechanical
Power supply (V/Hz)	230/50
Refrigerant	R134a/R600a
Noise Level (dB(A))	49

CAN COOLERS
OPEN TOP
COOLERS

CAN COOLERS OPEN TOP COOLERS



UMD 65 KS

Temperature Range °C	+2/+12
Climate Class	3
Gross/Net Volume (lt)	65/57
Gross/Net Weight (kg)	34/32
Dimensions (WxDxH) (mm)	
Internal	Ø470
External	Ø570x998
With Packing	605x605x1000
Loadability (pc)	
20ft DC	51
40ft DC	111
80 m³ Truck	123
Capacity	
Input Power (W)	140
Energy Cons. (kWh/24h)	2,6
Type of cooling	Mechanical
Power supply (V/Hz)	230/50
Refrigerant	R134a
Noise Level (dB(A))	42,5



UMD 110 KS

Temperature Range °C	+2/+12
Climate Class	3
Gross/Net Volume (lt)	110/103
Gross/Net Weight (kg)	40,5/30,5
Dimensions (WxDxH) (mm)	
Internal	520x320x570
External	660x460x970
With Packing	690x500x1350
Loadability (pc)	
20ft DC	64
40ft DC	128
80 m³ Truck	144
Capacity	
Input Power (W)	140/160
Energy Cons. (kWh/24h)	2,6/2,5
Type of cooling	Mechanical
Power supply (V/Hz)	230/50
Refrigerant	R134a/R600a
Noise Level (dB(A))	42,5

SINGLE-DOUBLE DOOR BOTTLE COOLERS

SINGLE-DOUBLE DOOR BOTTLE COOLERS



USS 175 DTKL

Temperature Range °C	+1/+10
Climate Class	4
Gross/Net Volume (lt)	171/145
Gross/Net Weight (kg)	70/64
Dimensions (WxDxH) (mm)	
Internal	357x362x1410
External	435x460x2013
With Packing	465x545x2050
Loadability (pc)	
20ft DC	44
40ft DC	96
80 m ³ Truck	108
Shelves/Baskets (pcs)	5
Capacity	
Can (330 ml)	200
Pet Bottle (500 ml)	116
Input Power (W)	200/140
Energy Cons. (kWh/24h)	3,5/2,81
Type of cooling	Mechanical
Power supply (V/Hz)	230/50
Refrigerant	R134a/R600a
Noise Level (dB(A))	52



USS 220 DTKL

Temperature Range °C	+1/+10
Climate Class	4
Gross/Net Volume (lt)	215/190
Gross/Net Weight (kg)	68/61
Dimensions (WxDxH) (mm)	
Internal	505x462x1025
External	595x640x1435
With Packing	665x685x1620
Loadability (pc)	
20ft DC	24
40ft DC	54
80 m ³ Truck	60
Shelves/Baskets (pcs)	3
Capacity	
Can (330 ml)	224
Pet Bottle (500 ml)	154
Input Power (W)	250/310
Energy Cons. (kWh/24h)	3,9/3,02
Type of cooling	Mechanical
Power supply (V/Hz)	230/50
Refrigerant	R134a/R600a
Noise Level (dB(A))	46,8



USS 220 DTK

Temperature Range °C	+1/+10
Climate Class	4
Gross/Net Volume (lt)	215/190
Gross/Net Weight (kg)	65/58
Dimensions (WxDxH) (mm)	
Internal	505x462x1025
External	595x640x1310
With Packing	665x685x1480
Loadability (pc)	
20ft DC	24
40ft DC	54
80 m ³ Truck	60
Shelves/Baskets (pcs)	3
Capacity	
Can (330 ml)	224
Pet Bottle (500 ml)	154
Input Power (W)	235/240
Energy Cons. (kWh/24h)	3,5/2,6
Type of cooling	Mechanical
Power supply (V/Hz)	230/50
Refrigerant	R134a/R600a
Noise Level (dB(A))	46,8

SINGLE-DOUBLE DOOR BOTTLE COOLERS



USS 220 DTK BK

Temperature Range °C	+1/+10
Climate Class	4
Gross/Net Volume (lt)	215/190
Gross/Net Weight (kg)	58/52
Dimensions (WxDxH) (mm)	
Internal	505x462x1025
External	595x640x1310
With Packing	665x685x1480
Loadability (pc)	
20ft DC	24
40ft DC	54
80 m³ Truck	60
Shelves/Baskets (pcs)	3
Capacity	
Can (330 ml)	224
Pet Bottle (500 ml)	154
Input Power (W)	235/197
Energy Cons. (kWh/24h)	2,7/1,68
Type of cooling	Mechanical
Power supply (V/Hz)	230/50
Refrigerant	R134a/R600a
Noise Level (dB(A))	46,8



USS 275 DTKL

Temperature Range °C	+1/+10
Climate Class	4
Gross/Net Volume (lt)	293/238
Gross/Net Weight (kg)	83/76
Dimensions (WxDxH) (mm)	
Internal	420x497x1408
External	500x640x1980
With Packing	570x685x2080
Loadability (pc)	
20ft DC	32
40ft DC	68
80 m³ Truck	79
Shelves/Baskets (pcs)	5
Capacity	
Can (330 ml)	
Pet Bottle (500 ml)	
Input Power (W)	270/270
Energy Cons. (kWh/24h)	3,5/3,2
Type of cooling	Mechanical
Power supply (V/Hz)	230/50
Refrigerant	R134a/R600a
Noise Level (dB(A))	46,8



USS 300 DTKL

Temperature Range °C	+1/+10
Climate Class	4
Gross/Net Volume (lt)	290/260
Gross/Net Weight (kg)	80/74
Dimensions (WxDxH) (mm)	
Internal	505x462x1350
External	595x640x1780
With Packing	665x685x1950
Loadability (pc)	
20ft DC	24
40ft DC	54
80 m³ Truck	60
Shelves/Baskets (pcs)	4
Capacity	
Can (330 ml)	331
Pet Bottle (500 ml)	224
Input Power (W)	300/300
Energy Cons. (kWh/24h)	4,1/3,00
Type of cooling	Mechanical
Power supply (V/Hz)	230/50
Refrigerant	R134a/R600a
Noise Level (dB(A))	46,8

SINGLE-DOUBLE DOOR BOTTLE COOLERS



USS 300 DTK

Temperature Range °C	+1/+10
Climate Class	4
Gross/Net Volume (lt)	290/260
Gross/Net Weight (kg)	74/68
Dimensions (WxDxH) (mm)	
Internal	505x462x1355
External	595x640x1640
With Packing	665x685x1810
Loadability (pc)	
20ft DC	24
40ft DC	54
80 m³ Truck	60
Shelves/Baskets (pcs)	4
Capacity	
Can (330 ml)	331
Pet Bottle (500 ml)	224
Input Power (W)	290/275
Energy Cons. (kWh/24h)	3,6/2,64
Type of cooling	Mechanical
Power supply (V/Hz)	230/50
Refrigerant	R134a/R600a
Noise Level (dB(A))	46,8



USS 300 DTK BK

Temperature Range °C	+1/+10
Climate Class	4
Gross/Net Volume (lt)	290/260
Gross/Net Weight (kg)	65/59
Dimensions (WxDxH) (mm)	
Internal	505x462x1355
External	595x640x1640
With Packing	665x685x1810
Loadability (pc)	
20ft DC	24
40ft DC	54
80 m³ Truck	60
Shelves/Baskets (pcs)	4
Capacity	
Can (330 ml)	331
Pet Bottle (500 ml)	224
Input Power (W)	290/201
Energy Cons. (kWh/24h)	2,9/1,7
Type of cooling	Mechanical
Power supply (V/Hz)	230/50
Refrigerant	R134a/R600a
Noise Level (dB(A))	46,8



USS 374 DTKL

Temperature Range °C	+1/+10
Climate Class	4
Gross/Net Volume (lt)	372/345
Gross/Net Weight (kg)	90/80,4
Dimensions (WxDxH) (mm)	
Internal	505x462x1555
External	595x604x1980
With Packing	665x685x2150
Loadability (pc)	
20ft DC	24
40ft DC	54
80 m³ Truck	60
Shelves/Baskets (pcs)	5
Capacity	
Can (330 ml)	399
Pet Bottle (500 ml)	259
Input Power (W)	370/325
Energy Cons. (kWh/24h)	5,2/3,8
Type of cooling	Mechanical
Power supply (V/Hz)	230/50
Refrigerant	R134a/R600a
Noise Level (dB(A))	46,8

SINGLE-DOUBLE DOOR BOTTLE COOLERS



USS 374 D2KL

Temperature Range °C	+1/+10
Climate Class	4
Gross/Net Volume (lt)	372/345
Gross/Net Weight (kg)	86/79
Dimensions (WxDxH) (mm)	
Internal	505x462x1555
External	595x604x1980
With Packing	665x685x2130
Loadability (pc)	
20ft DC	24
40ft DC	54
80 m³ Truck	60
Shelves/Baskets (pcs)	5
Capacity	
Can (330 ml)	399
Pet Bottle (500 ml)	259
Input Power (W)	370/325
Energy Cons. (kWh/24h)	5,2/3,8
Type of cooling	Mechanical
Power supply (V/Hz)	230/50
Refrigerant	R134a/R600a
Noise Level (dB(A))	46,8



USS 374 DTKLB

Temperature Range °C	+1/+10
Climate Class	4
Gross/Net Volume (lt)	380/345
Gross/Net Weight (kg)	90/83
Dimensions (WxDxH) (mm)	
Internal	505x462x1555
External	595x625x1980
With Packing	665x685x2080
Loadability (pc)	
20ft DC	24
40ft DC	54
80 m³ Truck	60
Shelves/Baskets (pcs)	5
Capacity	
Can (330 ml)	476
Pet Bottle (500 ml)	308
Input Power (W)	370/325
Energy Cons. (kWh/24h)	4,9/3,8
Type of cooling	Mechanical
Power supply (V/Hz)	230/50
Refrigerant	R134a/R600a
Noise Level (dB(A))	46,8



USS 374 DTKLE

Temperature Range °C	+1/+10
Climate Class	4
Gross/Net Volume (lt)	372/345
Gross/Net Weight (kg)	85/78
Dimensions (WxDxH) (mm)	
Internal	505x462x1555
External	595x640x1980
With Packing	665x685x2150
Loadability (pc)	
20ft DC	24
40ft DC	54
80 m³ Truck	60
Shelves/Baskets (pcs)	5
Capacity	
Can (330 ml)	399
Pet Bottle (500 ml)	259
Input Power (W)	370/325
Energy Cons. (kWh/24h)	5,2/3,8
Type of cooling	Mechanical
Power supply (V/Hz)	230/50
Refrigerant	R134a/R600a
Noise Level (dB(A))	46,8

SINGLE-DOUBLE DOOR BOTTLE COOLERS



USS 374 DTK

Temperature Range °C	+1/+10
Climate Class	4
Gross/Net Volume (lt)	372/345
Gross/Net Weight (kg)	81/74
Dimensions (WxDxH) (mm)	
Internal	505x462x1555
External	595x640x1840
With Packing	665x685x2010
Loadability (pc)	
20ft DC	24
40ft DC	54
80 m ³ Truck	60
Shelves/Baskets (pcs)	5
Capacity	
Can (330 ml)	399
Pet Bottle (500 ml)	259
Input Power (W)	350/250
Energy Cons. (kWh/24h)	4,8/2,2
Type of cooling	Mechanical
Power supply (V/Hz)	230/50
Refrigerant	R134a/R600a
Noise Level (dB(A))	46,8

USS 374 DTK BK

Temperature Range °C	+1/+10
Climate Class	4
Gross/Net Volume (lt)	372/345
Gross/Net Weight (kg)	70/64
Dimensions (WxDxH) (mm)	
Internal	505x462x1555
External	595x640x1840
With Packing	665x685x2010
Loadability (pc)	
20ft DC	24
40ft DC	54
80 m ³ Truck	60
Shelves/Baskets (pcs)	5
Capacity	
Can (330 ml)	399
Pet Bottle (500 ml)	259
Input Power (W)	350/225
Energy Cons. (kWh/24h)	4,3/1,94
Type of cooling	Mechanical
Power supply (V/Hz)	230/50
Refrigerant	R134a/R600a
Noise Level (dB(A))	46,8

USS 380 DTKL

Temperature Range °C	+1/+10
Climate Class	4
Gross/Net Volume (lt)	388/372
Gross/Net Weight (kg)	100/92
Dimensions (WxDxH) (mm)	
Internal	505X462X1555
External	595X640X1980
With Packing	666X685X2150
Loadability (pc)	
20ft DC	24
40ft DC	51
80 m ³ Truck	60
Shelves/Baskets (pcs)	5
Capacity	
Can (330 ml)	378
Pet Bottle (500 ml)	186
Input Power (W)	450
Energy Cons. (kWh/24h)	3,648
Type of cooling	Electronic
Power supply (V/Hz)	230/50
Refrigerant	R290
Noise Level (dB(A))	48

SINGLE-DOUBLE DOOR BOTTLE COOLERS



USS 420 DTK

Temperature Range °C	+1/+10
Climate Class	4
Gross/Net Volume (lt)	420/263
Gross/Net Weight (kg)	108,5/98
Dimensions (WxDxH) (mm)	
Internal	518x499x1630
External	595x680x2038
With Packing	610x680x2170
Loadability (pc)	
20ft DC	27
40ft DC	57
80 m³ Truck	66
Shelves/Baskets (pcs)	5
Capacity	
Can (330 ml)	385
Pet Bottle (500 ml)	210
Input Power (W)	250
Energy Cons. (kWh/24h)	2,6
Type of cooling	Electronic
Power supply (V/Hz)	230/50
Refrigerant	R600a
Noise Level (dB(A))	48



USS 440 DTKL

Temperature Range °C	+1/+10
Climate Class	4
Gross/Net Volume (lt)	439/299
Gross/Net Weight (kg)	112/101
Dimensions (WxDxH) (mm)	
Internal	585x495x1515
External	680x655x2090
With Packing	760x705x2230
Loadability (pc)	
20ft DC	24
40ft DC	51
80 m³ Truck	57
Shelves/Baskets (pcs)	5
Capacity	
Can (330 ml)	504
Pet Bottle (500 ml)	376
Input Power (W)	390/350
Energy Cons. (kWh/24h)	5,7/5,45
Type of cooling	Mechanical
Power supply (V/Hz)	230/50
Refrigerant	R134a/R600a
Noise Level (dB(A))	51,6



USS 440 DTKLB

Temperature Range °C	+1/+10
Climate Class	4
Gross/Net Volume (lt)	477/346
Gross/Net Weight (kg)	111/100
Dimensions (WxDxH) (mm)	
Internal	585x495x1515
External	680x660x2090
With Packing	760x705x2230
Loadability (pc)	
20ft DC	24
40ft DC	51
80 m³ Truck	57
Shelves/Baskets (pcs)	5
Capacity	
Can (330 ml)	504
Pet Bottle (500 ml)	376
Input Power (W)	390/350
Energy Cons. (kWh/24h)	5,7/4,15
Type of cooling	Mechanical
Power supply (V/Hz)	230/50
Refrigerant	R134a/R600a
Noise Level (dB(A))	51,6

SINGLE-DOUBLE DOOR BOTTLE COOLERS



USS 500 DTKL

Temperature Range °C	+1/+10
Climate Class	4
Gross/Net Volume (lt)	485/350
Gross/Net Weight (kg)	124/115
Dimensions (WxDxH) (mm)	
Internal	577x500x1684
External	680x655x2090
With Packing	760x705x2207
Loadability (pc)	
20ft DC	24
40ft DC	51
80 m ³ Truck	57
Shelves/Baskets (pcs)	5
Capacity	
Can (330 ml)	504
Pet Bottle (500 ml)	376
Input Power (W)	550/500
Energy Cons. (kWh/24h)	6,5/5,9
Type of cooling	Mechanical
Power supply (V/Hz)	230/50
Refrigerant	R134a/R600a
Noise Level (dB(A))	51,6



USS 690 DTKL

Temperature Range °C	+1/+10
Climate Class	4
Gross/Net Volume (lt)	657/629
Gross/Net Weight (kg)	136/123
Dimensions (WxDxH) (mm)	
Internal	695x560x1690
External	780x700x2127
With Packing	850x755x2260
Loadability (pc)	
20ft DC	18
40ft DC	42
80 m ³ Truck	47
Shelves/Baskets (pcs)	5
Capacity	
Can (330 ml)	700
Pet Bottle (500 ml)	350
Input Power (W)	381
Energy Cons. (kWh/24h)	5,9/5,11
Type of cooling	Mechanical
Power supply (V/Hz)	230/50
Refrigerant	R134a/R290
Noise Level (dB(A))	51,6



USS 700 DTK

Temperature Range °C	+1/+10
Climate Class	4
Gross/Net Volume (lt)	683/578
Gross/Net Weight (kg)	151/140,5
Dimensions (WxDxH) (mm)	
Internal	702x560x1791
External	780x705x2202
With Packing	795x710x2320
Loadability (pc)	
20ft DC	21
40ft DC	45
80 m ³ Truck	57
Shelves/Baskets (pcs)	5
Capacity	
Can (330 ml)	700
Pet Bottle (500 ml)	350
Input Power (W)	425
Energy Cons. (kWh/24h)	5,11
Type of cooling	Mechanical
Power supply (V/Hz)	230/50
Refrigerant	R290
Noise Level (dB(A))	55

SINGLE-DOUBLE DOOR BOTTLE COOLERS



USS 748 D2KL

Temperature Range °C	+1/+10
Climate Class	4
Gross/Net Volume (lt)	744/690
Gross/Net Weight (kg)	166/154
Dimensions (WxDxH) (mm)	
Internal	1010x462x1555
External	1200x640x1980
With Packing	1270x720x2080
Loadability (pc)	
20ft DC	13
40ft DC	27
80 m³ Truck	31
Shelves/Baskets (pcs)	2x5
Capacity	
Can (330 ml)	399x2
Pet Bottle (500 ml)	259x2
Input Power (W)	730/650
Energy Cons. (kWh/24h)	9,8/7,6
Type of cooling	Mechanical
Power supply (V/Hz)	230/50
Refrigerant	R134a/R600a
Noise Level (dB(A))	46,8



USS 810 DTK

Temperature Range °C	+1/+10
Climate Class	4
Gross/Net Volume (lt)	718/554
Gross/Net Weight (kg)	154/143
Dimensions (WxDxH) (mm)	
Internal	734x553x1780
External	810x661x2183
With Packing	825x710x2320
Loadability (pc)	
20ft DC	21
40ft DC	42
80 m³ Truck	48
Shelves/Baskets (pcs)	5
Capacity	
Can (330 ml)	924
Pet Bottle (500 ml)	360
Input Power (W)	421
Energy Cons. (kWh/24h)	4,43
Type of cooling	Electronic
Power supply (V/Hz)	230/50
Refrigerant	R290
Noise Level (dB(A))	57



USS 890 D2K

Temperature Range °C	+1/+10
Climate Class	4
Gross/Net Volume (lt)	813/573
Gross/Net Weight (kg)	174/160
Dimensions (WxDxH) (mm)	
Internal	810x649x1556
External	890x769x2004
With Packing	950x840x2140
Loadability (pc)	
20ft DC	12
40ft DC	28
80 m³ Truck	32
Shelves/Baskets (pcs)	5
Capacity	
Can (330 ml)	960
Pet Bottle (500 ml)	480
Input Power (W)	554
Energy Cons. (kWh/24h)	6,24
Type of cooling	Electronic
Power supply (V/Hz)	230/50
Refrigerant	R290
Noise Level (dB(A))	49

SINGLE-DOUBLE DOOR BOTTLE COOLERS



USS 900 DSCL

Temperature Range °C	+1/+10
Climate Class	4
Gross/Net Volume (lt)	810/780
Gross/Net Weight (kg)	
Dimensions (WxDxH) (mm)	
Internal	820 x 574 x 1421
External	900 x 742 x 2102
With Packing	960 x 790 x 2260
Loadability (pc)	
20ft DC	12
40ft DC	28
80 m³ Truck	32
Shelves/Baskets (pcs)	5
Capacity	
Can (330 ml)	1016
Pet Bottle (500 ml)	680
Input Power (W)	1000
Energy Cons. (kWh/24h)	8,8
Type of cooling	Mechanical
Power supply (V/Hz)	230/50
Refrigerant	R290
Noise Level (dB(A))	55,4



USS 1100 DSCL

Temperature Range °C	+1/+10
Climate Class	4
Gross/Net Volume (lt)	988,5/768
Gross/Net Weight (kg)	186/171
Dimensions (WxDxH) (mm)	
Internal	1000x652x1533
External	1110x820x2010
With Packing	1150x870x2160
Loadability (pc)	
20ft DC	12
40ft DC	26
80 m³ Truck	30
Shelves/Baskets (pcs)	5
Capacity	
Can (330 ml)	1190
Pet Bottle (500 ml)	833
Input Power (W)	850
Energy Cons. (kWh/24h)	10,8/
Type of cooling	Mechanical
Power supply (V/Hz)	230/50
Refrigerant	R134a/R290
Noise Level (dB(A))	55,4



USS 1000 DSCL

Temperature Range °C	+1/+10
Climate Class	4
Gross/Net Volume (lt)	771/524
Gross/Net Weight (kg)	160/150
Dimensions (WxDxH) (mm)	
Internal	890x572x1533
External	1000x742x2000
With Packing	1060x790x2160
Loadability (pc)	
20ft DC	14
40ft DC	30
80 m³ Truck	38
Shelves/Baskets (pcs)	5
Capacity	
Can (330 ml)	910
Pet Bottle (500 ml)	546
Input Power (W)	700/730
Energy Cons. (kWh/24h)	8,9/7,8
Type of cooling	Mechanical
Power supply (V/Hz)	230/50
Refrigerant	R134a/R290
Noise Level (dB(A))	55,4

SINGLE-DOUBLE DOOR BOTTLE COOLERS



USS 1200 DSCL

Temperature Range °C	+1/+10
Climate Class	4
Gross/Net Volume (lt)	945/645
Gross/Net Weight (kg)	178/164
Dimensions (WxDxH) (mm)	
Internal	1090x572x1533
External	1200x742x2000
With Packing	1260x790x2160
Loadability (pc)	
20ft DC	11
40ft DC	24
80 m ³ Truck	31
Shelves/Baskets (pcs)	5
Capacity	
Can (330 ml)	1120
Pet Bottle (500 ml)	672
Input Power (W)	850/1000
Energy Cons. (kWh/24h)	10,7/9,5
Type of cooling	Mechanical
Power supply (V/Hz)	230/50
Refrigerant	R134a/R290
Noise Level (dB(A))	55,4



USS 1000 D2KL

Temperature Range °C	+1/+10
Climate Class	4
Gross/Net Volume (lt)	881/645
Gross/Net Weight (kg)	169/158
Dimensions (WxDxH) (mm)	
Internal	890x670x1533
External	1000x792x2000
With Packing	1060x840x2160
Loadability (pc)	
20ft DC	14
40ft DC	28
80 m ³ Truck	32
Shelves/Baskets (pcs)	5
Capacity	
Can (330 ml)	910
Pet Bottle (500 ml)	546
Input Power (W)	700/890
Energy Cons. (kWh/24h)	8,9/7,8
Type of cooling	Mechanical
Power supply (V/Hz)	230/50
Refrigerant	R134a/R290
Noise Level (dB(A))	55,4

SINGLE-DOUBLE DOOR BOTTLE COOLERS



USS 1600 D2KL

Temperature Range °C	+1/+10
Climate Class	4
Gross/Net Volume (lt)	1247/891
Gross/Net Weight (kg)	262/238
Dimensions (WxDxH) (mm)	
Internal	1480x568x1518
External	1600x750x2073
With Packing	1675x805x2124
Loadability (pc)	
20ft DC	7
40ft DC	14
80 m ³ Truck	24
Shelves/Baskets (pcs)	15
Capacity	
Can (330 ml)	1386
Pet Bottle (500 ml)	734
Input Power (W)	775
Energy Cons. (kWh/24h)	6,6
Type of cooling	Electronic
Power supply (V/Hz)	230/50
Refrigerant	R290
Noise Level (dB(A))	49



USS 1600 D3KL

Temperature Range °C	+1/+10
Climate Class	4
Gross/Net Volume (lt)	1247/891
Gross/Net Weight (kg)	262/238
Dimensions (WxDxH) (mm)	
Internal	1480x568x1518
External	1600x750x2073
With Packing	1675x805x2124
Loadability (pc)	
20ft DC	7
40ft DC	14
80 m ³ Truck	24
Shelves/Baskets (pcs)	15
Capacity	
Can (330 ml)	1386
Pet Bottle (500 ml)	734
Input Power (W)	775
Energy Cons. (kWh/24h)	6,6
Type of cooling	Electronic
Power supply (V/Hz)	230/50
Refrigerant	R290
Noise Level (dB(A))	49

PREMIUM COOLERS

PREMIUM COOLERS



USS 95 DTK Premium

Temperature Range °C	+1/+10
Climate Class	4
Gross/Net Volume (lt)	85/55
Gross/Net Weight (kg)	50/40
Dimensions (WxDxH) (mm)	
Internal	410x380x550
External	482x516x895
With Packing	585x595x1055
Loadability (pc)	
20ft DC	72
40ft DC	160
80 m³ Truck	184
Shelves/Baskets (pcs)	2
Capacity	
Can (330 ml)	75
Pet Bottle (500 ml)	65
Input Power (W)	215
Energy Cons. (kWh/24h)	4,5/1,5
Type of cooling	Mechanical
Power supply (V/Hz)	230/50
Refrigerant	R134a/R600a
Noise Level (dB(A))	44,2

USS 175 DTK Premium

Temperature Range °C	+1/+10
Climate Class	4
Gross/Net Volume (lt)	171/145
Gross/Net Weight (kg)	70/64,5
Dimensions (WxDxH) (mm)	
Internal	357x362x1410
External	435x475x1910
With Packing	505x630x1960
Loadability (pc)	
20ft DC	36
40ft DC	75
80 m³ Truck	84
Shelves/Baskets (pcs)	5
Capacity	
Can (330 ml)	180
Pet Bottle (500 ml)	100
Input Power (W)	180
Energy Cons. (kWh/24h)	3,16
Type of cooling	Mechanical
Power supply (V/Hz)	230/50
Refrigerant	R600a
Noise Level (dB(A))	49

USS 220 DTK Premium

Temperature Range °C	+1/+10
Climate Class	4
Gross/Net Volume (lt)	215/190
Gross/Net Weight (kg)	71/64
Dimensions (WxDxH) (mm)	
Internal	505x462x1020
External	595x662x1426
With Packing	665x685x1500
Loadability (pc)	
20ft DC	24
40ft DC	54
80 m³ Truck	60
Shelves/Baskets (pcs)	3
Capacity	
Can (330 ml)	224
Pet Bottle (500 ml)	154
Input Power (W)	235/240
Energy Cons. (kWh/24h)	3,3/2,6
Type of cooling	Mechanical
Power supply (V/Hz)	230/50
Refrigerant	R134a/R600a
Noise Level (dB(A))	48

PREMIUM COOLERS



USS 275 DTK Premium

Temperature Range °C	+1/+10
Climate Class	4
Gross/Net Volume (lt)	295/242
Gross/Net Weight (kg)	97/85
Dimensions (WxDxH) (mm)	
Internal	424x498x1408
External	587x591x1833
With Packing	640x640x1970
Loadability (pc)	
20ft DC	27
40ft DC	54
80 m ³ Truck	63
Shelves/Baskets (pcs)	5
Capacity	
Can (330 ml)	
Pet Bottle (500 ml)	
Input Power (W)	250/225
Energy Cons. (kWh/24h)	3,05/1,9
Type of cooling	Mechanical
Power supply (V/Hz)	230/50
Refrigerant	R134a/R600a
Noise Level (dB(A))	48

USS 275 DTKL Premium

Temperature Range °C	+1/+10
Climate Class	4
Gross/Net Volume (lt)	293/238
Gross/Net Weight (kg)	97/85
Dimensions (WxDxH) (mm)	
Internal	420x497x1408
External	500x600x2045
With Packing	570x685x2110
Loadability (pc)	
20ft DC	32
40ft DC	68
80 m ³ Truck	76
Shelves/Baskets (pcs)	4
Capacity	
Can (330 ml)	
Pet Bottle (500 ml)	
Input Power (W)	270/270
Energy Cons. (kWh/24h)	3,5/3,2
Type of cooling	Mechanical
Power supply (V/Hz)	230/50
Refrigerant	R134a/R600a
Noise Level (dB(A))	48

USS 300 DTK Premium

Temperature Range °C	+1/+10
Climate Class	4
Gross/Net Volume (lt)	290/260
Gross/Net Weight (kg)	88/80
Dimensions (WxDxH) (mm)	
Internal	500x445x1355
External	595x665x1720
With Packing	665x685x1820
Loadability (pc)	
20ft DC	24
40ft DC	54
80 m ³ Truck	60
Shelves/Baskets (pcs)	4
Capacity	
Can (330 ml)	
Pet Bottle (500 ml)	
Input Power (W)	290/290
Energy Cons. (kWh/24h)	3,6/3,6
Type of cooling	Mechanical
Power supply (V/Hz)	230/50
Refrigerant	R134a/R600a
Noise Level (dB(A))	48

PREMIUM COOLERS



USS 374 DTK Premium

Temperature Range °C	+1/+10
Climate Class	4
Gross/Net Volume (lt)	372/345
Gross/Net Weight (kg)	96/88
Dimensions (WxDxH) (mm)	
Internal	500x445x1553
External	595x665x1920
With Packing	665x700x2020
Loadability (pc)	
20ft DC	27
40ft DC	54
80 m³ Truck	
Shelves/Baskets (pcs)	4
Capacity	
Can (330 ml)	
Pet Bottle (500 ml)	
Input Power (W)	350/350
Energy Cons. (kWh/24h)	4,8/2,2
Type of cooling	Mechanical
Power supply (V/Hz)	230/50
Refrigerant	R134a/R600a
Noise Level (dB(A))	48



USS 374 DTK Lean

Temperature Range °C	+1/+10
Climate Class	4
Gross/Net Volume (lt)	372/345
Gross/Net Weight (kg)	74,5/69
Dimensions (WxDxH) (mm)	
Internal	525x465x1555
External	595x640x1840
With Packing	665x685x2010
Loadability (pc)	
20ft DC	24
40ft DC	54
80 m³ Truck	30
Shelves/Baskets (pcs)	5
Capacity	
Can (330 ml)	399
Pet Bottle (500 ml)	259
Input Power (W)	350/250
Energy Cons. (kWh/24h)	4,8/2,2
Type of cooling	Mechanical
Power supply (V/Hz)	230/50
Refrigerant	R134a/R600a
Noise Level (dB(A))	48



USS 690 DTKL LCD

Temperature Range °C	+1/+10
Climate Class	4
Gross/Net Volume (lt)	657/629
Gross/Net Weight (kg)	136/123
Dimensions (WxDxH) (mm)	
Internal	702x555x1682
External	780x705x2080
With Packing	855x780x2310
Loadability (pc)	
20ft DC	18
40ft DC	42
80 m³ Truck	48
Shelves/Baskets (pcs)	5
Capacity	
Can (330 ml)	700
Pet Bottle (500 ml)	350
Input Power (W)	485/650
Energy Cons. (kWh/24h)	8/7,1
Type of cooling	Mechanical
Power supply (V/Hz)	230/50
Refrigerant	R134a/R600a
Noise Level (dB(A))	52

PREMIUM COOLERS



USS 700 DTKL Premium

Temperature Range °C	+1/+10
Climate Class	4
Gross/Net Volume (lt)	666/577
Gross/Net Weight (kg)	140/132
Dimensions (WxDxH) (mm)	
Internal	681x555x1790
External	780x755x2130
With Packing	800x770x2210
Loadability (pc)	
20ft DC	18
40ft DC	42
80 m³ Truck	48
Shelves/Baskets (pcs)	5
Capacity	
Can (330 ml)	930
Pet Bottle (500 ml)	444
Input Power (W)	427
Energy Cons. (kWh/24h)	5,9
Type of cooling	Mechanical
Power supply (V/Hz)	230/50
Refrigerant	R134a/R600a
Noise Level (dB(A))	52

USS 95 DTK*

Temperature Range °C	+1/+10
Climate Class	4
Gross/Net Volume (lt)	85/55
Gross/Net Weight (kg)	43/37,5
Dimensions (WxDxH) (mm)	
Internal	410x380x550
External	480x506x840
With Packing	560x590x960
Loadability (pc)	
20ft DC	80
40ft DC	160
80 m³ Truck	184
Shelves/Baskets (pcs)	2
Capacity	
Can (330 ml)	75
Pet Bottle (500 ml)	65
Input Power (W)	215
Energy Cons. (kWh/24h)	4,5/1,5
Type of cooling	Electronic
Power supply (V/Hz)	230/50
Refrigerant	R134a/R600a
Noise Level (dB(A))	44,2

*FRAMELESS DESIGN

USS 374 DTKL*

Temperature Range °C	+1/+10
Climate Class	4
Gross/Net Volume (lt)	372/345
Gross/Net Weight (kg)	99/
Dimensions (WxDxH) (mm)	
Internal	505x462x1555
External	595x604x1980
With Packing	665x685x2150
Loadability (pc)	
20ft DC	24
40ft DC	54
80 m³ Truck	60
Shelves/Baskets (pcs)	5
Capacity	
Can (330 ml)	399
Pet Bottle (500 ml)	259
Input Power (W)	325
Energy Cons. (kWh/24h)	4,8/3,2
Type of cooling	Electronic
Power supply (V/Hz)	230/50
Refrigerant	R134a/R600a
Noise Level (dB(A))	46,8

*FRAMELESS DESIGN

PREMIUM COOLERS



USS 1200 D2KL*

Temperature Range °C	+1/+10
Climate Class	4
Gross/Net Volume (lt)	1055/1048
Gross/Net Weight (kg)	201/
Dimensions (WxDxH) (mm)	
Internal	1091x677x1573
External	1200x770x2030
With Packing	1260x840x2140
Loadability (pc)	
20ft DC	11
40ft DC	23
80 m ³ Truck	26
Shelves/Baskets (pcs)	4
Capacity	
Can (330 ml)	1120
Pet Bottle (500 ml)	672
Input Power (W)	890
Energy Cons. (kWh/24h)	5,1
Type of cooling	Electronic
Power supply (V/Hz)	230/50
Refrigerant	R290
Noise Level (dB(A))	55,4
*FRAMELESS DESIGN	



USS 1500 D3KL*

Temperature Range °C	+1/+10
Climate Class	4
Gross/Net Volume (lt)	1208/1148
Gross/Net Weight (kg)	223/
Dimensions (WxDxH) (mm)	
Internal	1390x577x1522
External	1500x712x2044
With Packing	1565x750x2060
Loadability (pc)	
20ft DC	10
40ft DC	23
80 m ³ Truck	26
Shelves/Baskets (pcs)	12
Capacity	
Can (330 ml)	
Pet Bottle (500 ml)	
Input Power (W)	1200
Energy Cons. (kWh/24h)	5,2
Type of cooling	Electronic
Power supply (V/Hz)	230/50
Refrigerant	R290
Noise Level (dB(A))	63
*FRAMELESS DESIGN	

SUB-ZERO BOTTLE COOLERS

SUB-ZERO BOTTLE COOLERS



USS 95 DTKL SZ

Temperature Range °C	-2,5/+1
Climate Class	4
Gross/Net Volume (lt)	85/55
Gross/Net Weight (kg)	43/37,5
Dimensions (WxDxH) (mm)	
Internal	410x380x550
External	480 x520x840
With Packing	580x600x960
Loadability (pc)	
20ft DC	72
40ft DC	160
80 m³ Truck	184
Shelves/Baskets (pcs)	2
Capacity	
Can (330 ml)	75
Pet Bottle (500 ml)	65
Input Power (W)	215
Energy Cons. (kWh/24h)	4,5/1,5
Type of cooling	Mechanical
Power supply (V/Hz)	230/50
Refrigerant	R134a/R600a
Noise Level (dB(A))	44,2



USS 374 DTKL SZ

Temperature Range °C	-2,5/+1
Climate Class	4
Gross/Net Volume (lt)	372/345
Gross/Net Weight (kg)	90/80
Dimensions (WxDxH) (mm)	
Internal	505x462x1555
External	595x640x1980
With Packing	665x685x2080
Loadability (pc)	
20ft DC	27
40ft DC	57
80 m³ Truck	60
Shelves/Baskets (pcs)	5
Capacity	
Can (330 ml)	399
Pet Bottle (500 ml)	259
Input Power (W)	550
Energy Cons. (kWh/24h)	7,7
Type of cooling	Mechanical
Power supply (V/Hz)	230/50
Refrigerant	R134a/R600a
Noise Level (dB(A))	46,8

SUB-ZERO BOTTLE COOLERS



USS 374 DTKL SZ BK

Temperature Range °C	-2,5/+1
Climate Class	4
Gross/Net Volume (lt)	372/345
Gross/Net Weight (kg)	85/75,5
Dimensions (WxDxH) (mm)	
Internal	505x462x1555
External	595x640x1980
With Packing	665x685x2080
Loadability (pc)	
20ft DC	27
40ft DC	57
80 m³ Truck	60
Shelves/Baskets (pcs)	5
Capacity	
Can (330 ml)	399
Pet Bottle (500 ml)	259
Input Power (W)	330
Energy Cons. (kWh/24h)	4,8
Type of cooling	Mechanical
Power supply (V/Hz)	230/50
Refrigerant	R134a/R600a
Noise Level (dB(A))	46,8

USS 440 DTKL SZ

Temperature Range °C	-2,5/+1
Climate Class	4
Gross/Net Volume (lt)	412/347
Gross/Net Weight (kg)	122/111
Dimensions (WxDxH) (mm)	
Internal	580x495x1515
External	680x655x2090
With Packing	760x705x2207
Loadability (pc)	
20ft DC	24
40ft DC	51
80 m³ Truck	57
Shelves/Baskets (pcs)	5
Capacity	
Can (330 ml)	504
Pet Bottle (500 ml)	376
Input Power (W)	550
Energy Cons. (kWh/24h)	7,9
Type of cooling	Mechanical
Power supply (V/Hz)	230/50
Refrigerant	R134a/R600a
Noise Level (dB(A))	51,6

USS 440 DTKL SZ BK

Temperature Range °C	-2,5/+1
Climate Class	4
Gross/Net Volume (lt)	412/347
Gross/Net Weight (kg)	135/125
Dimensions (WxDxH) (mm)	
Internal	580x495x1515
External	680x655x2090
With Packing	760x705x2207
Loadability (pc)	
20ft DC	24
40ft DC	51
80 m³ Truck	57
Shelves/Baskets (pcs)	5
Capacity	
Can (330 ml)	504
Pet Bottle (500 ml)	376
Input Power (W)	390
Energy Cons. (kWh/24h)	4,5
Type of cooling	Mechanical
Power supply (V/Hz)	230/50
Refrigerant	R134a/R600a
Noise Level (dB(A))	51,6

WINE COOLERS

WINE COOLERS



USS 374 DTKB SRP

Temperature Range °C	+10/+18
Climate Class	4
Gross/Net Volume (lt)	372/345
Gross/Net Weight (kg)	83,4/74
Dimensions (WxDxH) (mm)	
Internal	505x462x1555
External	595x640x1840
With Packing	665x685x1940
Loadability (pc)	
20ft DC	24
40ft DC	54
80 m³ Truck	60
Shelves/Baskets (pcs) (optional)	5
Capacity	
Can (330 ml)	
Pet Bottle (500 ml)	
Input Power (W)	270/300
Energy Cons. (kWh/24h)	2,5/1,93
Type of cooling	Mechanical
Power supply (V/Hz)	230/50
Refrigerant	R134a/R600a
Noise Level (dB(A))	46,8



USS 374 DTK SRP

Temperature Range °C	+10/+18
Climate Class	4
Gross/Net Volume (lt)	372/345
Gross/Net Weight (kg)	83,4/74
Dimensions (WxDxH) (mm)	
Internal	505x462x1555
External	595x640x1840
With Packing	665x685x1940
Loadability (pc)	
20ft DC	24
40ft DC	54
80 m³ Truck	60
Shelves/Baskets (pcs) (optional)	5
Capacity	
Can (330 ml)	
Pet Bottle (500 ml)	
Input Power (W)	270/300
Energy Cons. (kWh/24h)	2,5/1,93
Type of cooling	Mechanical
Power supply (V/Hz)	230/50
Refrigerant	R134a/R600a
Noise Level (dB(A))	46,8



USS 374 DTK BK SRP

Temperature Range °C	+10/+18
Climate Class	4
Gross/Net Volume (lt)	372/345
Gross/Net Weight (kg)	74,4/65
Dimensions (WxDxH) (mm)	
Internal	505x462x1555
External	595x640x1840
With Packing	665x685x1940
Loadability (pc)	
20ft DC	24
40ft DC	54
80 m³ Truck	60
Shelves/Baskets (pcs) (optional)	5
Capacity	
Can (330 ml)	
Pet Bottle (500 ml)	
Input Power (W)	270/300
Energy Cons. (kWh/24h)	1,76/1,6
Type of cooling	Mechanical
Power supply (V/Hz)	230/50
Refrigerant	R134a/R600a
Noise Level (dB(A))	46,8

The background is a solid blue color with a series of white, wavy, horizontal lines that create a sense of motion or cooling. The lines are of varying lengths and thicknesses, some tapering to points on the right side.

OPEN FRONT COOLERS

OPEN FRONT COOLERS



UMD 670 AS

Temperature Range °C	3
Climate Class	+2/+12
Gross/Net Volume (lt)	670/305
Gross/Net Weight (kg)	225/213
Dimensions (WxDxH) (mm)	
Internal	710x640x1400
External	800x1000x2155
With Packing	890x1050x2213
Loadability (pc)	
20ft DC	12
40ft DC	26
80 m³ Truck	30
Shelves/Baskets (pcs) (optional)	4
Capacity	
Can (330 ml)	600
Pet Bottle (500 ml)	330
Input Power (W)	1450
Energy Cons. (kWh/24h)	20
Type of cooling	Mechanical
Power supply (V/Hz)	230/50
Refrigerant	R404A
Noise Level (dB(A))	58,5

UMD 1100 AS

Temperature Range °C	3
Climate Class	+2/+12
Gross/Net Volume (lt)	1100/750
Gross/Net Weight (kg)	318/300
Dimensions (WxDxH) (mm)	
Internal	1170x640x1400
External	1260x1070x2262
With Packing	1350x1120x2320
Loadability (pc)	
20ft DC	8
40ft DC	17
80 m³ Truck	20
Shelves/Baskets (pcs) (optional)	4
Capacity	
Can (330 ml)	1020
Pet Bottle (500 ml)	540
Input Power (W)	1670
Energy Cons. (kWh/24h)	29
Type of cooling	Mechanical
Power supply (V/Hz)	230/50
Refrigerant	R404A
Noise Level (dB(A))	61,5

UMD 290 AS

Temperature Range °C	3
Climate Class	+2/+12
Gross/Net Volume (lt)	294/290
Gross/Net Weight (kg)	84/76,5
Dimensions (WxDxH) (mm)	
Internal	420x457x1190
External	500x565x1830
With Packing	520x640x1860
Loadability (pc)	
20ft DC	36
40ft DC	72
80 m³ Truck	84
Shelves/Baskets (pcs) (optional)	4
Capacity	
Can (330 ml)	
Pet Bottle (500 ml)	
Input Power (W)	700
Energy Cons. (kWh/24h)	8,2
Type of cooling	Mechanical
Power supply (V/Hz)	230/50
Refrigerant	R290
Noise Level (dB(A))	58

OPEN FRONT COOLERS



UMD 240 AS

Temperature Range °C	3
Climate Class	-1/+7
Gross/Net Volume (lt)	240/150
Gross/Net Weight (kg)	130/106
Dimensions (WxDxH) (mm)	
Internal	540x433x845
External	580x727x1422
With Packing	785x870x1620
Loadability (pc)	
20ft DC	14
40ft DC	30
80 m ³ Truck	45
Shelves/Baskets (pcs) (optional)	3
Capacity	
Can (330 ml)	182
Pet Bottle (500 ml)	140
Input Power (W)	549
Energy Cons. (kWh/24h)	10,853
Type of cooling	Electronic
Power supply (V/Hz)	230/50
Refrigerant	R290
Noise Level (dB(A))	58



UMD 180 AS

Temperature Range °C	3
Climate Class	-1/+5
Gross/Net Volume (lt)	180/80
Gross/Net Weight (kg)	121/89
Dimensions (WxDxH) (mm)	
Internal	540x585x555
External	590x712x1060
With Packing	675x800x1225
Loadability (pc)	
20ft DC	21
40ft DC	44
80 m ³ Truck	120
Shelves/Baskets (pcs) (optional)	
Capacity	
Can (330 ml)	105
Pet Bottle (500 ml)	
Input Power (W)	450
Energy Cons. (kWh/24h)	7,29
Type of cooling	Electronic
Power supply (V/Hz)	230/50
Refrigerant	R290
Noise Level (dB(A))	58

SUPERMARKET FREEZERS / COOLERS

SUPERMARKET FREEZERS / COOLERS



UMD 1450 D/S DF BODRUM

Climate Class	3
Energy Cons. (kWh/24h)	"[6,2(for freezer R404A)/4,29(for cooler R404A)] [6,03(for freezer R290)/4,17for cooler R290]]"
Temperature Range °C	[-18/-23][-1/+5]
Refrigerant	R404A/R290
Gross/Net Volume (lt)	588/302
Gross/Net Weight (kg)	N/A
Internal Dimensions (WxDxH) (mm)	1320X720X723
External Dimensions (WxDxH) (mm)	1456X858X723
With PackingDimensions (WxDxH) (mm)	1510X910X1000
Seperator(pcs)	1
Loadability (pc)	
20ft DC	14
40ft DC	30
80 m³ Truck	34
Noise Level (dB(A))	57



UMD 1850 D/S DF BODRUM

Climate Class	3
Energy Cons. (kWh/24h)	"[8,15(for freezer R404A)/4,82(for cooler R404A)] [7,53(for freezer R290)/4,57for cooler R290]]"
Temperature Range °C	[-18/-23][-1/+5]
Refrigerant	R404A/R290
Gross/Net Volume (lt)	783/413
Gross/Net Weight (kg)	138/122
Internal Dimensions (WxDxH) (mm)	1720X720X723
External Dimensions (WxDxH) (mm)	1856X858X723
With PackingDimensions (WxDxH) (mm)	1910X910X1000
Seperator(pcs)	1
Loadability (pc)	
20ft DC	12
40ft DC	26
80 m³ Truck	28
Noise Level (dB(A))	58

SUPERMARKET FREEZERS / COOLERS



UMD 1850 GB D/S DF BODRUM

Climate Class	3
Energy Cons. (kWh/24h)	"[7,52(for freezer R404A)/4,83(for cooler R404A)] [6,35(for freezer R290)/4,28for cooler R290)]"
Temperature Range °C	[-18/-23][-1/+5]
Refrigerant	R404A/R290
Gross/Net Volume (lt)	713/335
Gross/Net Weight (kg)	138/122
Internal Dimensions (WxDxH) (mm)	1720X720X578
External Dimensions (WxDxH) (mm)	1856X858X816
With PackingDimensions (WxDxH) (mm)	1910X910X1000
Seperator(pcs)	1
Loadability (pc)	
20ft DC	12
40ft DC	26
80 m ³ Truck	28
Noise Level (dB(A))	58



UMD 2100 D/S DF BODRUM

Climate Class	3
Energy Cons. (kWh/24h)	"[9,50(for freezer R404A)/5,93(for cooler R404A)] [8,78(for freezer R290)/5,42for cooler R290)]"
Temperature Range °C	[-18/-23][-1/+5]
Refrigerant	R404A/R290
Gross/Net Volume (lt)	905/483
Gross/Net Weight (kg)	170/152
Internal Dimensions (WxDxH) (mm)	1970X720X723
External Dimensions (WxDxH) (mm)	2106X858X890
With PackingDimensions (WxDxH) (mm)	2106x910x1000
Seperator(pcs)	1
Loadability (pc)	
20ft DC	12
40ft DC	26
80 m ³ Truck	28
Noise Level (dB(A))	58

SUPERMARKET FREEZERS / COOLERS



UMD 2500 D/S DF BODRUM

Climate Class	3
Energy Cons. (kWh/24h)	"[9,61(for freezer R404A)/6,70(for cooler R404A)] [9,8(for freezer R290)/5,99for cooler R290]]"
Temperature Range °C	[-18/-23][-1/+5]
Refrigerant	R404A/R290
Gross/Net Volume (lt)	1100/594
Gross/Net Weight (kg)	191/172
Internal Dimensions (WxDxH) (mm)	2370X720X723
External Dimensions (WxDxH) (mm)	2500x858x890
With PackingDimensions (WxDxH) (mm)	2560x910x1000
Seperator(pcs)	1
Loadability (pc)	
20ft DC	8
40ft DC	16
80 m³ Truck	20
Noise Level (dB(A))	58



UMD 1450 D DF BODRUM

Climate Class	3
Energy Cons. (kWh/24h)	6,2/6,03
Temperature Range °C	-18/-23
Refrigerant	R404A/R290
Gross/Net Volume (lt)	588/377
Gross/Net Weight (kg)	128,5/111,5
Internal Dimensions (WxDxH) (mm)	1320x720x723
External Dimensions (WxDxH) (mm)	1456x858x890
With PackingDimensions (WxDxH) (mm)	1510x910x1000
Seperator(pcs)	Optional
Loadability (pc)	
20ft DC	14
40ft DC	30
80 m³ Truck	34
Noise Level (dB(A))	57

SUPERMARKET FREEZERS / COOLERS



UMD 1850 D DF BODRUM

Climate Class	3
Energy Cons. (kWh/24h)	8,15/7,53
Temperature Range °C	-18/-23
Refrigerant	R404A/R290
Gross/Net Volume (lt)	783/511
Gross/Net Weight (kg)	138/122
Internal Dimensions (WxDxH) (mm)	1720x720x723
External Dimensions (WxDxH) (mm)	1856x858x890
With Packing Dimensions (WxDxH) (mm)	1910x910x1000
Separator(pcs)	Optional
Loadability (pc)	
20ft DC	12
40ft DC	26
80 m ³ Truck	28
Noise Level (dB(A))	58



UMD 1850 GB D DF BODRUM

Climate Class	3
Energy Cons. (kWh/24h)	7,52/6,35
Temperature Range °C	-18/-23
Refrigerant	R404A/R290
Gross/Net Volume (lt)	783/563,8
Gross/Net Weight (kg)	138/122
Internal Dimensions (WxDxH) (mm)	1720x720x650
External Dimensions (WxDxH) (mm)	1856x858x816
With Packing Dimensions (WxDxH) (mm)	1910x910x1000
Separator(pcs)	Optional
Loadability (pc)	
20ft DC	12
40ft DC	26
80 m ³ Truck	28
Noise Level (dB(A))	58

SUPERMARKET FREEZERS / COOLERS



UMD 2100 D DF BODRUM

Climate Class	3
Energy Cons. (kWh/24h)	9,502/8,78
Temperature Range °C	-18/-23
Refrigerant	R404A/R290
Gross/Net Volume (lt)	905/595
Gross/Net Weight (kg)	170/152
Internal Dimensions (WxDxH) (mm)	1970x720x723
External Dimensions (WxDxH) (mm)	2106x858x890
With Packing Dimensions (WxDxH) (mm)	2106x910x1000
Separator(pcs)	Optional
Loadability (pc)	
20ft DC	12
40ft DC	26
80 m ³ Truck	28
Noise Level (dB(A))	58



UMD 2500 D DF BODRUM

Climate Class	3
Energy Cons. (kWh/24h)	9,616/9,80
Temperature Range °C	-18/-23
Refrigerant	R404A/R290
Gross/Net Volume (lt)	1100/729
Gross/Net Weight (kg)	191/172
Internal Dimensions (WxDxH) (mm)	2370x720x723
External Dimensions (WxDxH) (mm)	2500x858x890
With Packing Dimensions (WxDxH) (mm)	2560x910x1000
Separator(pcs)	Optional
Loadability (pc)	
20ft DC	8
40ft DC	16
80 m ³ Truck	20
Noise Level (dB(A))	58

SUPERMARKET FREEZERS / COOLERS



UMD 1450 D BODRUM

Climate Class	3
Energy Cons. (kWh/24h)	5,99/5,708
Temperature Range °C	-18/-23
Refrigerant	R404A/R290
Gross/Net Volume (lt)	588/419
Gross/Net Weight (kg)	128,5/111,5
Internal Dimensions (WxDxH) (mm)	1320x720x723
External Dimensions (WxDxH) (mm)	1456x858x890
With Packing Dimensions (WxDxH) (mm)	1510x910x1000
Separator(pcs)	Optional
Loadability (pc)	
20ft DC	14
40ft DC	30
80 m³ Truck	34
Noise Level (dB(A))	57



UMD 1850 D BODRUM

Climate Class	3
Energy Cons. (kWh/24h)	7,88/5,93
Temperature Range °C	-18/-23
Refrigerant	R404A/R290
Gross/Net Volume (lt)	783/563
Gross/Net Weight (kg)	138/122
Internal Dimensions (WxDxH) (mm)	1720x720x723
External Dimensions (WxDxH) (mm)	1856x858x890
With Packing Dimensions (WxDxH) (mm)	1910x910x1000
Separator(pcs)	Optional
Loadability (pc)	
20ft DC	12
40ft DC	26
80 m³ Truck	28
Noise Level (dB(A))	58

SUPERMARKET FREEZERS / COOLERS



UMD 1850 GB D BODRUM

Climate Class	3
Energy Cons. (kWh/24h)	7,56/5,94
Temperature Range °C	-18/-23
Refrigerant	R404A/R290
Gross/Net Volume (lt)	713/476
Gross/Net Weight (kg)	138/122
Internal Dimensions (WxDxH) (mm)	1720x720x650
External Dimensions (WxDxH) (mm)	1856x858x816
With PackingDimensions (WxDxH) (mm)	1910x910x1000
Separator(pcs)	Optional
Loadability (pc)	
20ft DC	12
40ft DC	26
80 m³ Truck	28
Noise Level (dB(A))	58



UMD 2100 D BODRUM

Climate Class	3
Energy Cons. (kWh/24h)	8,92/7,67
Temperature Range °C	-18/-23
Refrigerant	R404A/R290
Gross/Net Volume (lt)	905/653
Gross/Net Weight (kg)	170/152
Internal Dimensions (WxDxH) (mm)	1970x720x723
External Dimensions (WxDxH) (mm)	2106x858x890
With PackingDimensions (WxDxH) (mm)	2160x910x1000
Separator(pcs)	Optional
Loadability (pc)	
20ft DC	12
40ft DC	26
80 m³ Truck	28
Noise Level (dB(A))	58

SUPERMARKET FREEZERS / COOLERS



UMD 2500 D BODRUM

Climate Class	3
Energy Cons. (kWh/24h)	9,95/9,33
Temperature Range °C	-18/-23
Refrigerant	R404A/R290
Gross/Net Volume (lt)	1100/797
Gross/Net Weight (kg)	191/172
Internal Dimensions (WxDxH) (mm)	2370x720x723
External Dimensions (WxDxH) (mm)	2500x858x890
With Packing Dimensions (WxDxH) (mm)	2560x910x1000
Separator(pcs)	Optional
Loadability (pc)	
20ft DC	8
40ft DC	16
80 m ³ Truck	20
Noise Level (dB(A))	58



UMD 1450 D İZMİR

Climate Class	3
Energy Cons. (kWh/24h)	4,85/4,61
Temperature Range °C	-18/-23
Refrigerant	R404A/R290
Gross/Net Volume (lt)	588/419
Gross/Net Weight (kg)	
Internal Dimensions (WxDxH) (mm)	1320x720x685
External Dimensions (WxDxH) (mm)	1456x858x890
With Packing Dimensions (WxDxH) (mm)	1510x915x980
Separator(pcs)	Optional
Loadability (pc)	
20ft DC	14
40ft DC	30
80 m ³ Truck	34
Noise Level (dB(A))	57

SUPERMARKET FREEZERS / COOLERS



UMD 1850 D İZMİR

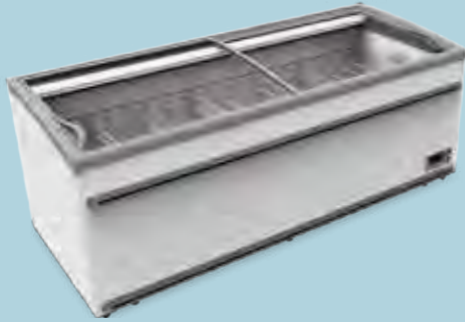
Climate Class	3
Energy Cons. (kWh/24h)	6,75/6,41
Temperature Range °C	-18/-23
Refrigerant	R404A/R290
Gross/Net Volume (lt)	783/563
Gross/Net Weight (kg)	165/150
Internal Dimensions (WxDxH) (mm)	1720x720x685
External Dimensions (WxDxH) (mm)	1856x858x890
With Packing Dimensions (WxDxH) (mm)	1915x915x980
Separator(pcs)	Optional
Loadability (pc)	
20ft DC	12
40ft DC	26
80 m³ Truck	42
Noise Level (dB(A))	58



UMD 1850 GB D İZMİR

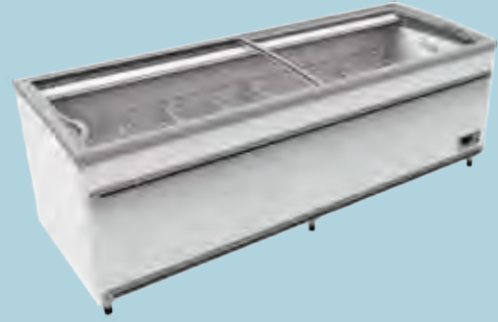
Climate Class	3
Energy Cons. (kWh/24h)	6,34/5,99
Temperature Range °C	-18/-23
Refrigerant	R404A/R290
Gross/Net Volume (lt)	713/476
Gross/Net Weight (kg)	158/143
Internal Dimensions (WxDxH) (mm)	1720x720x685
External Dimensions (WxDxH) (mm)	1856x858x832
With Packing Dimensions (WxDxH) (mm)	1915x915x920
Separator(pcs)	Optional
Loadability (pc)	
20ft DC	12
40ft DC	26
80 m³ Truck	42
Noise Level (dB(A))	58

SUPERMARKET FREEZERS / COOLERS



UMD 2100 D İZMİR

Climate Class	3
Energy Cons. (kWh/24h)	7,09/6,48
Temperature Range °C	-18/-23
Refrigerant	R404A/R290
Gross/Net Volume (lt)	905/653
Gross/Net Weight (kg)	180/163
Internal Dimensions (WxDxH) (mm)	1970x720x685
External Dimensions (WxDxH) (mm)	2106x858x890
With Packing Dimensions (WxDxH) (mm)	2170x915x980
Separator(pcs)	Optional
Loadability (pc)	
20ft DC	12
40ft DC	26
80 m³ Truck	42
Noise Level (dB(A))	58



UMD 2500 D İZMİR

Climate Class	3
Energy Cons. (kWh/24h)	8,06/7,58
Temperature Range °C	-18/-23
Refrigerant	R404A/R290
Gross/Net Volume (lt)	1100/797
Gross/Net Weight (kg)	220/200
Internal Dimensions (WxDxH) (mm)	2370x720x685
External Dimensions (WxDxH) (mm)	2506x858x890
With Packing Dimensions (WxDxH) (mm)	2570x915x980
Separator(pcs)	Optional
Loadability (pc)	
20ft DC	8
40ft DC	16
80 m³ Truck	30
Noise Level (dB(A))	58

SUPERMARKET FREEZERS / COOLERS



UMD 1450 D DF İZMİR

Climate Class	3
Energy Cons. (kWh/24h)	5,28/5,06
Temperature Range °C	-18/-23
Refrigerant	R404A/R290
Gross/Net Volume (lt)	588/377
Gross/Net Weight (kg)	
Internal Dimensions (WxDxH) (mm)	1320x720x685
External Dimensions (WxDxH) (mm)	1456x858x890
With PackingDimensions (WxDxH) (mm)	1510x915x980
Seperator(pcs)	1
Loadability (pc)	
20ft DC	14
40ft DC	30
80 m³ Truck	34
Noise Level (dB(A))	57



UMD 1850 D DF İZMİR

Climate Class	3
Energy Cons. (kWh/24h)	7,41/7,09
Temperature Range °C	-18/-23
Refrigerant	R404A/R290
Gross/Net Volume (lt)	783/511
Gross/Net Weight (kg)	165/150
Internal Dimensions (WxDxH) (mm)	1720x720x685
External Dimensions (WxDxH) (mm)	1856x858x890
With PackingDimensions (WxDxH) (mm)	1915x915x980
Seperator(pcs)	1
Loadability (pc)	
20ft DC	12
40ft DC	26
80 m³ Truck	42
Noise Level (dB(A))	58

SUPERMARKET FREEZERS / COOLERS



UMD 1850 GB D DF İZMİR

Climate Class	3
Energy Cons. (kWh/24h)	6,98/6,65
Temperature Range °C	-18/-23
Refrigerant	R404A/R290
Gross/Net Volume (lt)	713/433
Gross/Net Weight (kg)	158/143
Internal Dimensions (WxDxH) (mm)	1720x720x685
External Dimensions (WxDxH) (mm)	1856x858x832
With Packing Dimensions (WxDxH) (mm)	1915x915x920
Seperator(pcs)	1
Loadability (pc)	
20ft DC	12
40ft DC	26
80 m³ Truck	42
Noise Level (dB(A))	58



UMD 2100 D DF İZMİR

Climate Class	3
Energy Cons. (kWh/24h)	7,57/7,18
Temperature Range °C	-18/-23
Refrigerant	R404A/R290
Gross/Net Volume (lt)	905/595
Gross/Net Weight (kg)	180/163
Internal Dimensions (WxDxH) (mm)	1970x720x685
External Dimensions (WxDxH) (mm)	2106x858x890
With Packing Dimensions (WxDxH) (mm)	2170x915x980
Seperator(pcs)	1
Loadability (pc)	
20ft DC	12
40ft DC	26
80 m³ Truck	42
Noise Level (dB(A))	58

SUPERMARKET FREEZERS / COOLERS



UMD 2500 D DF İZMİR

Climate Class	3
Energy Cons. (kWh/24h)	8,76/8,22
Temperature Range °C	-18/-23
Refrigerant	R404A/R290
Gross/Net Volume (lt)	1100/729
Gross/Net Weight (kg)	220/200
Internal Dimensions (WxDxH) (mm)	2370x720x685
External Dimensions (WxDxH) (mm)	2506x858x890
With Packing Dimensions (WxDxH) (mm)	2570x915x980
Separator(pcs)	1
Loadability (pc)	
20ft DC	8
40ft DC	16
80 m ³ Truck	30
Noise Level (dB(A))	58



UMD 1450 D/S DF İZMİR

Climate Class	3
Energy Cons. (kWh/24h)	"[5,28(for freezer R404A)/ 3,59(for meat R404A)/3,18(for cooler R404A)] [5,06(for freezer R290)/ 3,4(for meat R290)/3,02(for cooler R290)]"
Temperature Range °C	[-18/-23][-2/+2][-1/+5]
Refrigerant	R404A/R290
Gross/Net Volume (lt)	588/302
Gross/Net Weight (kg)	
Internal Dimensions (WxDxH) (mm)	1320x720x685
External Dimensions (WxDxH) (mm)	1456x858x890
With Packing Dimensions (WxDxH) (mm)	1510x915x980
Separator(pcs)	1
Loadability (pc)	
20ft DC	14
40ft DC	30
80 m ³ Truck	34
Noise Level (dB(A))	57

SUPERMARKET FREEZERS / COOLERS



UMD 1850 D/S DF İZMİR

Climate Class	3
Energy Cons. (kWh/24h)	"[7,41(for freezer R404A)/ 4,54(for meat R404A)]/3,88(for cooler R404A)] [7,09(for freezer R290)/ 4,36(for meat R290)]/3,76(for cooler R290)]"
Temperature Range °C	[-18/-23][-2/+2][-1/+5]
Refrigerant	R404A/R290
Gross/Net Volume (lt)	783/413
Gross/Net Weight (kg)	165/150
Internal Dimensions (WxDxH) (mm)	1720x720x685
External Dimensions (WxDxH) (mm)	1856x858x890
With PackingDimensions (WxDxH) (mm)	1915x915x980
Seperator(pcs)	1
Loadability (pc)	
20ft DC	12
40ft DC	26
80 m ³ Truck	42
Noise Level (dB(A))	58



UMD 1850 GB D/S DF İZMİR

Climate Class	3
Energy Cons. (kWh/24h)	"[6,98(for freezer R404A)]/3,93(for meat R404A)]/3,39(for cooler R404A) [6,65(for freezer R290)/ 3,74(for meat R290)]/3,20(for cooler R290)]"
Temperature Range °C	[18/-23][-2/+2][-1/+5]
Refrigerant	R404A/R290
Gross/Net Volume (lt)	713/335
Gross/Net Weight (kg)	158/143
Internal Dimensions (WxDxH) (mm)	1720x720x685
External Dimensions (WxDxH) (mm)	1856x858x832
With PackingDimensions (WxDxH) (mm)	1915x915x920
Seperator(pcs)	1
Loadability (pc)	
20ft DC	12
40ft DC	26
80 m ³ Truck	42
Noise Level (dB(A))	58

SUPERMARKET FREEZERS / COOLERS



UMD 2100 D/S DF İZMİR

Climate Class	3
Energy Cons. (kWh/24h)	"[7,57(for freezer R404A)/4,94(for meat R404A)/4,26(for cooler R404A)] [7,18(for freezer R290)/4,69(for meat R290)/4,05(for cooler R290)]"
Temperature Range °C	[18/-23][-2/+2][-1/+5]
Refrigerant	R404A/R290
Gross/Net Volume (lt)	905/483
Gross/Net Weight (kg)	180/163
Internal Dimensions (WxDxH) (mm)	1970x720x685
External Dimensions (WxDxH) (mm)	2106x858x890
With PackingDimensions (WxDxH) (mm)	2170x915x980
Seperator(pcs)	1
Loadability (pc)	
20ft DC	12
40ft DC	26
80 m ³ Truck	42
Noise Level (dB(A))	58



UMD 2500 D/S DF İZMİR

Climate Class	3
Energy Cons. (kWh/24h)	"[8,76(for freezer R404A)/5,53(for meat R404A)/4,95(for cooler R404A)] [8,22(for freezer R290)/5,26(for meat R290)/4,61(for cooler R290)]"
Temperature Range °C	[-18/-23][-2/+2][-1/+5]
Refrigerant	R404A/R290
Gross/Net Volume (lt)	1100/594
Gross/Net Weight (kg)	220/200
Internal Dimensions (WxDxH) (mm)	2370x720x685
External Dimensions (WxDxH) (mm)	2506x858x890
With PackingDimensions (WxDxH) (mm)	2570x915x980
Seperator(pcs)	1
Loadability (pc)	
20ft DC	8
40ft DC	16
80 m ³ Truck	30
Noise Level (dB(A))	58

SUPERMARKET FREEZERS / COOLERS



UMD 1450 D/S DF VS İZMİR

Climate Class	3
Energy Cons. (kWh/24h)	[4,62(for freezer R290)/ 3,02(for meat R290)/2,75(for cooler R290)]
Temperature Range °C	[-18/-23][-2/+2][-1/+5]
Refrigerant	R290
Gross/Net Volume (lt)	588/302
Gross/Net Weight (kg)	
Internal Dimensions (WxDxH) (mm)	1320x720x685
External Dimensions (WxDxH) (mm)	1456x858x890
With PackingDimensions (WxDxH) (mm)	1510x915x980
Seperator(pcs)	1
Loadability (pc)	
20ft DC	14
40ft DC	30
80 m³ Truck	34
Noise Level (dB(A))	57



UMD 1850 D/S DF VS İZMİR

Climate Class	3
Energy Cons. (kWh/24h)	[6,09(for freezer R290)/3,88(for meat R290)/3,39(for cooler R290)]
Temperature Range °C	[-18/-23][-2/+2][-1/+5]
Refrigerant	R290
Gross/Net Volume (lt)	783/413
Gross/Net Weight (kg)	165/150
Internal Dimensions (WxDxH) (mm)	1720x720x685
External Dimensions (WxDxH) (mm)	1856x858x890
With PackingDimensions (WxDxH) (mm)	1915x915x980
Seperator(pcs)	1
Loadability (pc)	
20ft DC	12
40ft DC	26
80 m³ Truck	42
Noise Level (dB(A))	58



UMD 1850 GB D/S DF VS İZMİR

Climate Class	3
Energy Cons. (kWh/24h)	[5,66(for freezer R290)/3,36(for meat R290)/2,85(for cooler R290)]
Temperature Range °C	[-18/-23][-2/+2][-1/+5]
Refrigerant	R290
Gross/Net Volume (lt)	713/335
Gross/Net Weight (kg)	158/143
Internal Dimensions (WxDxH) (mm)	1720x720x685
External Dimensions (WxDxH) (mm)	1856x858x832
With PackingDimensions (WxDxH) (mm)	1915x915x920
Seperator(pcs)	1
Loadability (pc)	
20ft DC	12
40ft DC	26
80 m³ Truck	42
Noise Level (dB(A))	58



UMD 2100 D/S DF VS İZMİR

Climate Class	3
Energy Cons. (kWh/24h)	[6,35(for freezer R290)/4,23(for meat R290)/3,60(for cooler R290)]
Temperature Range °C	[-18/-23][-2/+2][-1/+5]
Refrigerant	R290
Gross/Net Volume (lt)	905/483
Gross/Net Weight (kg)	180/163
Internal Dimensions (WxDxH) (mm)	1970x720x685
External Dimensions (WxDxH) (mm)	2106x858x890
With PackingDimensions (WxDxH) (mm)	2170x915x980
Seperator(pcs)	1
Loadability (pc)	
20ft DC	12
40ft DC	26
80 m³ Truck	42
Noise Level (dB(A))	58

SUPERMARKET FREEZERS / COOLERS



UMD 2500 D/S DF VS İZMİR

Climate Class	3
Energy Cons. (kWh/24h)	[7,36(for freezer R290)/4,73(for meat R290)/4,03(for cooler R290)]
Temperature Range °C	[-18/-23][-2/+2][-1/+5]
Refrigerant	R290
Gross/Net Volume (lt)	1100/594
Gross/Net Weight (kg)	220/200
Internal Dimensions (WxDxH) (mm)	2370x720x685
External Dimensions (WxDxH) (mm)	2506x858x890
With PackingDimensions (WxDxH) (mm)	2570x915x980
Seperator(pcs)	1
Loadability (pc)	
20ft DC	8
40ft DC	16
80 m³ Truck	30
Noise Level (dB(A))	58



UMD 2100 D3K D/S DF MARMARİS

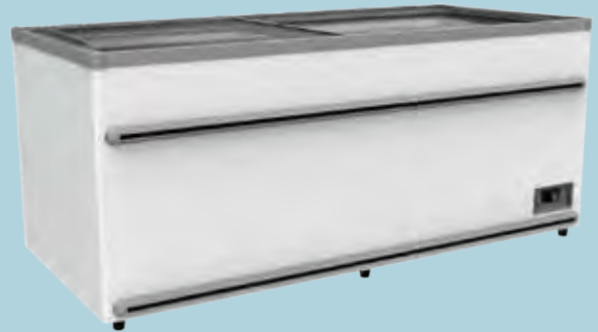
Climate Class	3
Energy Cons. (kWh/24h)	16,04
Temperature Range °C	-18/-23
Refrigerant	R404A
Gross/Net Volume (lt)	870/531
Gross/Net Weight (kg)	260/235
Internal Dimensions (WxDxH) (mm)	1978x478x947
External Dimensions (WxDxH) (mm)	2100x800x2333
With PackingDimensions (WxDxH) (mm)	2270x900x2575
Seperator(pcs)	
Loadability (pc)	
20ft DC	
40ft DC	
80 m³ Truck	15
Noise Level (dB(A))	58

SUPERMARKET FREEZERS / COOLERS



UMD 2500 D4K D/S DF MARMARİS

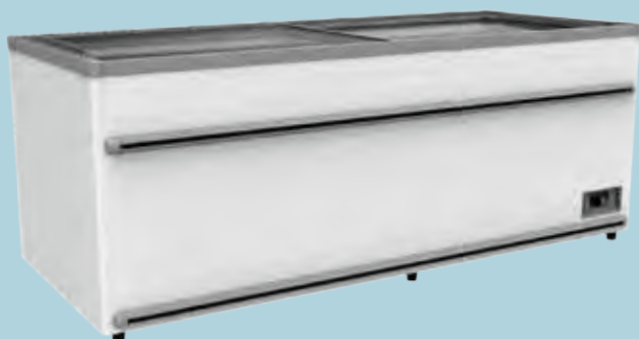
Climate Class	3
Energy Cons. (kWh/24h)	18,04
Temperature Range °C	-18/-23
Refrigerant	R404A
Gross/Net Volume (lt)	1076/650
Gross/Net Weight (kg)	290/260
Internal Dimensions (WxDxH) (mm)	2378x478x947
External Dimensions (WxDxH) (mm)	2500x800x2333
With Packing Dimensions (WxDxH) (mm)	2670x900x2575
Separator(pcs)	
Loadability (pc)	
20ft DC	
40ft DC	
80 m³ Truck	15
Noise Level (dB(A))	58



UMD 1450 D KAPADOKYA

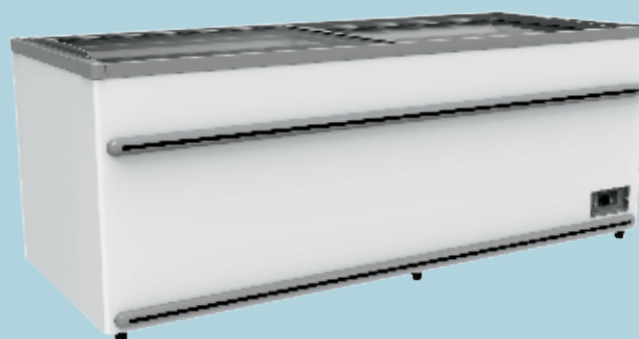
Climate Class	3
Energy Cons. (kWh/24h)	Under Development Test
Temperature Range °C	-18/-23
Refrigerant	R404A/R290
Gross/Net Volume (lt)	588/419
Gross/Net Weight (kg)	
Internal Dimensions (WxDxH) (mm)	1320x720x662
External Dimensions (WxDxH) (mm)	1456x858x826
With Packing Dimensions (WxDxH) (mm)	1510x915x885
Separator(pcs)	Optional
Loadability (pc)	
20ft DC	14
40ft DC	30
80 m³ Truck	34
Noise Level (dB(A))	57

SUPERMARKET FREEZERS / COOLERS



UMD 1850 D KAPADOKYA

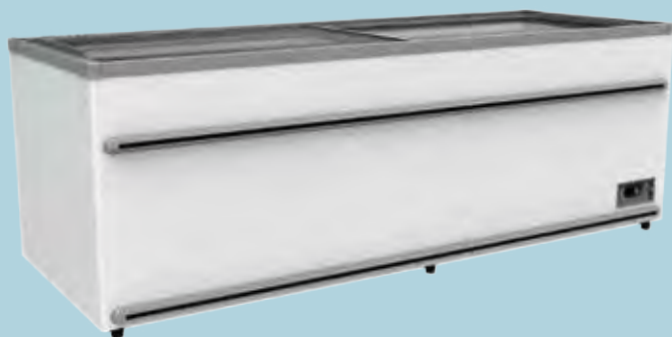
Climate Class	3
Energy Cons. (kWh/24h)	Under Development Test
Temperature Range °C	-18/-23
Refrigerant	R404A/R290
Gross/Net Volume (lt)	783/563
Gross/Net Weight (kg)	165/150
Internal Dimensions (WxDxH) (mm)	1720x720x662
External Dimensions (WxDxH) (mm)	1856x858x826
With Packing Dimensions (WxDxH) (mm)	1915x915x885
Separator(pcs)	Optional
Loadability (pc)	
20ft DC	12
40ft DC	26
80 m ³ Truck	42
Noise Level (dB(A))	58



UMD 2100 D KAPADOKYA

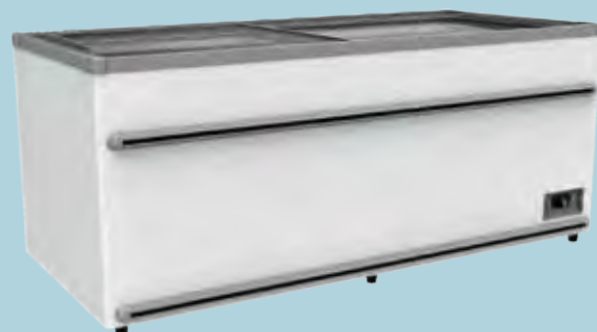
Climate Class	3
Energy Cons. (kWh/24h)	Under Development Test
Temperature Range °C	-18/-23
Refrigerant	R404A/R290
Gross/Net Volume (lt)	905/653
Gross/Net Weight (kg)	180/163
Internal Dimensions (WxDxH) (mm)	1970x720x662
External Dimensions (WxDxH) (mm)	2106x858x826
With Packing Dimensions (WxDxH) (mm)	2170x915x885
Separator(pcs)	Optional
Loadability (pc)	
20ft DC	12
40ft DC	26
80 m ³ Truck	42
Noise Level (dB(A))	58

SUPERMARKET FREEZERS / COOLERS



UMD 2500 D KAPADOKYA

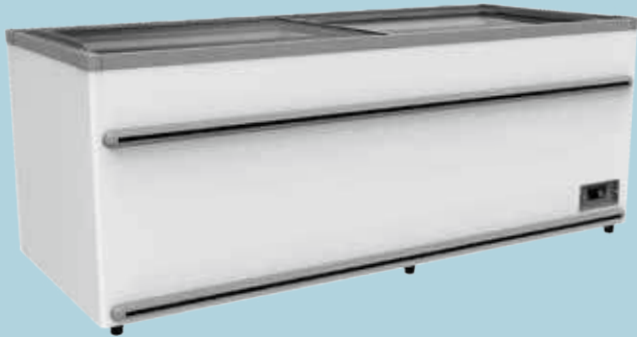
Climate Class	3
Energy Cons. (kWh/24h)	Under Development Test
Temperature Range °C	-18/-23
Refrigerant	R404A/R290
Gross/Net Volume (lt)	1100/797
Gross/Net Weight (kg)	220/200
Internal Dimensions (WxDxH) (mm)	2370x720x662
External Dimensions (WxDxH) (mm)	2506x858x826
With Packing Dimensions (WxDxH) (mm)	2570x915x885
Separator(pcs)	Optional
Loadability (pc)	
20ft DC	8
40ft DC	16
80 m ³ Truck	30
Noise Level (dB(A))	58



UMD 1450 D DF KAPADOKYA

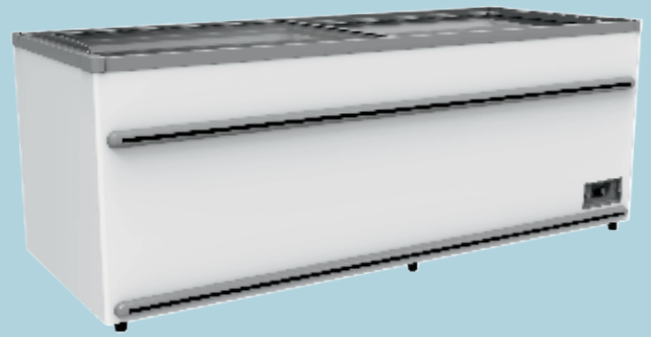
Climate Class	3
Energy Cons. (kWh/24h)	Under Development Test
Temperature Range °C	-18/-23
Refrigerant	R404A/R290
Gross/Net Volume (lt)	588/377
Gross/Net Weight (kg)	
Internal Dimensions (WxDxH) (mm)	1320x720x662
External Dimensions (WxDxH) (mm)	1456x858x826
With Packing Dimensions (WxDxH) (mm)	1510x915x885
Separator(pcs)	1
Loadability (pc)	
20ft DC	14
40ft DC	30
80 m ³ Truck	34
Noise Level (dB(A))	57

SUPERMARKET FREEZERS / COOLERS



UMD 1850 D DF KAPADOKYA

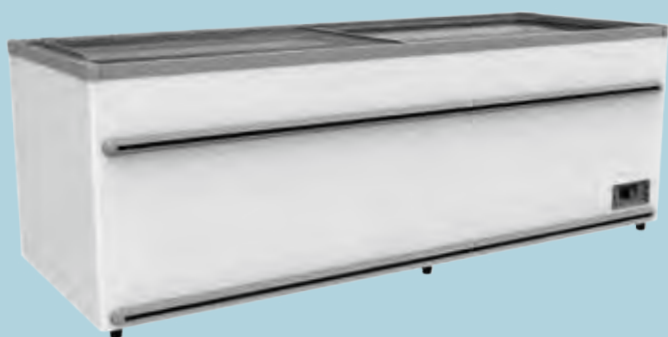
Climate Class	3
Energy Cons. (kWh/24h)	Under Development Test
Temperature Range °C	-18/-23
Refrigerant	R404A/R290
Gross/Net Volume (lt)	783/511
Gross/Net Weight (kg)	165/150
Internal Dimensions (WxDxH) (mm)	1720x720x662
External Dimensions (WxDxH) (mm)	1856x858x826
With Packing Dimensions (WxDxH) (mm)	1915x915x885
Separator(pcs)	1
Loadability (pc)	
20ft DC	12
40ft DC	26
80 m³ Truck	42
Noise Level (dB(A))	58



UMD 2100 D DF KAPADOKYA

Climate Class	3
Energy Cons. (kWh/24h)	Under Development Test
Temperature Range °C	-18/-23
Refrigerant	R404A/R290
Gross/Net Volume (lt)	905/595
Gross/Net Weight (kg)	180/163
Internal Dimensions (WxDxH) (mm)	1970x720x662
External Dimensions (WxDxH) (mm)	2106x858x826
With Packing Dimensions (WxDxH) (mm)	2170x915x885
Separator(pcs)	1
Loadability (pc)	
20ft DC	12
40ft DC	26
80 m³ Truck	42
Noise Level (dB(A))	58

SUPERMARKET FREEZERS / COOLERS



UMD 2500 D DF KAPADOKYA

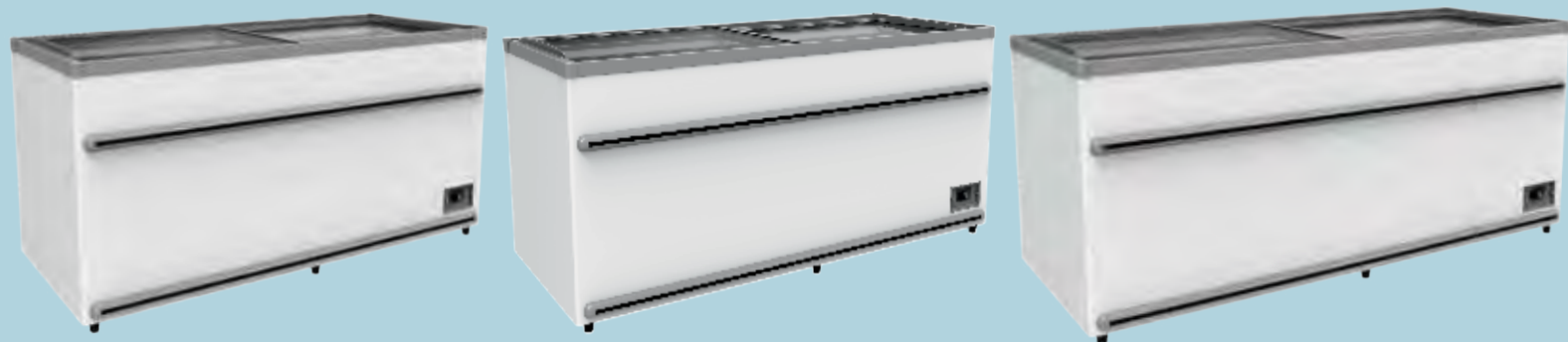
Climate Class	3
Energy Cons. (kWh/24h)	Under Development Test
Temperature Range °C	-18/-23
Refrigerant	R404A/R290
Gross/Net Volume (lt)	1100/729
Gross/Net Weight (kg)	220/200
Internal Dimensions (WxDxH) (mm)	2370x720x662
External Dimensions (WxDxH) (mm)	2506x858x826
With Packing Dimensions (WxDxH) (mm)	2570x915x885
Separator(pcs)	1
Loadability (pc)	
20ft DC	8
40ft DC	16
80 m ³ Truck	30
Noise Level (dB(A))	58



UMD 1450 D/S DF KAPADOKYA

Climate Class	3
Energy Cons. (kWh/24h)	Under Development Test
Temperature Range °C	[-18/-23][-2/+2][-1/+5]
Refrigerant	R404A/R290
Gross/Net Volume (lt)	588/302
Gross/Net Weight (kg)	
Internal Dimensions (WxDxH) (mm)	1320x720x662
External Dimensions (WxDxH) (mm)	1456x858x826
With Packing Dimensions (WxDxH) (mm)	1510x915x885
Separator(pcs)	1
Loadability (pc)	
20ft DC	14
40ft DC	30
80 m ³ Truck	34
Noise Level (dB(A))	57

SUPERMARKET FREEZERS / COOLERS



UMD 1850 D/S DF KAPADOKYA

Climate Class	3
Energy Cons. (kWh/24h)	Under Development Test
Temperature Range °C	[-18/-23][-2/+2][-1/+5]
Refrigerant	R404A/R290
Gross/Net Volume (lt)	783/413
Gross/Net Weight (kg)	165/150
Internal Dimensions (WxDxH) (mm)	1720x720x662
External Dimensions (WxDxH) (mm)	1856x858x826
With PackingDimensions (WxDxH) (mm)	1915x915x885
Seperator(pcs)	1
Loadability (pc)	
20ft DC	12
40ft DC	26
80 m³ Truck	42
Noise Level (dB(A))	58

UMD 2100 D/S DF KAPADOKYA

Climate Class	3
Energy Cons. (kWh/24h)	Under Development Test
Temperature Range °C	[-18/-23][-2/+2][-1/+5]
Refrigerant	R404A/R290
Gross/Net Volume (lt)	905/483
Gross/Net Weight (kg)	180/163
Internal Dimensions (WxDxH) (mm)	1970x720x662
External Dimensions (WxDxH) (mm)	2106x858x826
With PackingDimensions (WxDxH) (mm)	2170x915x885
Seperator(pcs)	1
Loadability (pc)	
20ft DC	12
40ft DC	26
80 m³ Truck	42
Noise Level (dB(A))	58

UMD 2500 D/S DF KAPADOKYA

Climate Class	3
Energy Cons. (kWh/24h)	Under Development Test
Temperature Range °C	[-18/-23][-2/+2][-1/+5]
Refrigerant	R404A/R290
Gross/Net Volume (lt)	1100/594
Gross/Net Weight (kg)	220/200
Internal Dimensions (WxDxH) (mm)	2370x720x662
External Dimensions (WxDxH) (mm)	2506x858x826
With PackingDimensions (WxDxH) (mm)	2570x915x885
Seperator(pcs)	1
Loadability (pc)	
20ft DC	8
40ft DC	16
80 m³ Truck	30
Noise Level (dB(A))	58

The background features a gradient from a light blue at the top to a darker blue at the bottom. Overlaid on this gradient are several horizontal, wavy lines in various shades of blue, creating a sense of movement and depth.

POOL TYPE SHOWCASES

POOL TYPE SHOWCASES




UMD 200 HS

Climate Class	3
Energy Cons. (kWh/24h)	9
Temperature Range °C	+1/+10
Refrigerant	R404A
Gross/Net Volume (lt)	200/165
Gross/Net Weight (kg)	138/128
Internal Dimensions (WxDxH) (mm)	705x1075x295
External Dimensions (WxDxH) (mm)	1015x1255x905
Loadability (pc)	
20ft DC	9
40ft DC	20
80 m³ Truck	23
Noise Level (dB(A))	54,5



UMD 200 HD

Climate Class	3
Energy Cons. (kWh/24h)	15
Temperature Range °C	-12/-22
Refrigerant	R404A
Gross/Net Volume (lt)	200/165
Gross/Net Weight (kg)	138/128
Internal Dimensions (WxDxH) (mm)	705x1075x295
External Dimensions (WxDxH) (mm)	1015x1255x905
Loadability (pc)	
20ft DC	9
40ft DC	20
80 m³ Truck	23
Noise Level (dB(A))	54,5

The background is a solid blue color with a series of white, wavy, horizontal lines that create a sense of motion and depth, resembling a stylized ice cream swirl or a dynamic graphic element.

ICE CREAM SHOWCASES

ICE CREAM SHOWCASES



UDR 7 B

Temperature Range °C	-12/-22
Climate Class	4
Ice Cream Box Volume (lt)	4,8
No of ice cream box	7
Gross/Net Weight (kg)	144/134
Dimensions (WxDxH) (mm)	
Internal	1220x550x500
External	1360x720x1250
With Packing	1380x780x1310
Loadability (pc)	
20ft DC	12
40ft DC	25
80 m³ Truck	28
Input Power (W)	900
Energy Cons. (kWh/24h)	14/
Type of cooling	Electronic
Power supply (V/Hz)	230/50
Refrigerant	R404A/R290
Noise Level (dB(A))	55

UDR 9 B

Temperature Range °C	-12/-22
Climate Class	4
Ice Cream Box Volume (lt)	4,8
No of ice cream box	9
Gross/Net Weight (kg)	188/177
Dimensions (WxDxH) (mm)	
Internal	1535x550x500
External	1680x720x1250
With Packing	1750x780x1310
Loadability (pc)	
20ft DC	9
40ft DC	19
80 m³ Truck	22
Input Power (W)	1050
Energy Cons. (kWh/24h)	17,8/
Type of cooling	Electronic
Power supply (V/Hz)	230/50
Refrigerant	R404A/R290
Noise Level (dB(A))	55

UDR 12 BEYAZID

Temperature Range °C	-18/-23
Climate Class	7
Ice Cream Box Volume (lt)	4,8
No of ice cream box	12
Gross/Net Weight (kg)	240/230
Dimensions (WxDxH) (mm)	
Internal	990x918x225
External	1175x1125x1340
With Packing	1200x1170x1450
Loadability (pc)	
20ft DC	4
40ft DC	9
80 m³ Truck	10
Input Power (W)	1250
Energy Cons. (kWh/24h)	20/
Type of cooling	Electronic
Power supply (V/Hz)	230/50
Refrigerant	R404A/R290
Noise Level (dB(A))	55

ICE CREAM SHOWCASES



UDR 12 BARBAROS

Temperature Range °C	-18/-23
Climate Class	7
Ice Cream Box Volume (lt)	4,8
No of ice cream box	12
Gross/Net Weight (kg)	240/230
Dimensions (WxDxH) (mm)	
Internal	990X918X225
External	1175x1130x1340
With Packing	1200x1170x1450
Loadability (pc)	
20ft DC	4
40ft DC	9
80 m³ Truck	10
Input Power (W)	1250
Energy Cons. (kWh/24h)	20/
Type of cooling	Electronic
Power supply (V/Hz)	230/50
Refrigerant	R404A/R290
Noise Level (dB(A))	55

UDR 12 KANUNI

Temperature Range °C	-18/-23
Climate Class	7
Ice Cream Box Volume (lt)	4,8
No of ice cream box	12
Gross/Net Weight (kg)	240/230
Dimensions (WxDxH) (mm)	
Internal	990X918X225
External	1175x1135x1340
With Packing	1200x1170x1450
Loadability (pc)	
20ft DC	4
40ft DC	9
80 m³ Truck	10
Input Power (W)	1250
Energy Cons. (kWh/24h)	20/
Type of cooling	Electronic
Power supply (V/Hz)	230/50
Refrigerant	R404A/R290
Noise Level (dB(A))	55

UDR 12 YAVUZ

Temperature Range °C	-18/-23
Climate Class	7
Ice Cream Box Volume (lt)	4,8
No of ice cream box	12
Gross/Net Weight (kg)	240/230
Dimensions (WxDxH) (mm)	
Internal	990X918X225
External	1150x1135x1340
With Packing	1200x1170x1450
Loadability (pc)	
20ft DC	4
40ft DC	9
80 m³ Truck	10
Input Power (W)	1250
Energy Cons. (kWh/24h)	20/
Type of cooling	Electronic
Power supply (V/Hz)	230/50
Refrigerant	R404A/R290
Noise Level (dB(A))	55

ICE CREAM SHOWCASES



UDR 18 ERTUĞRUL

Temperature Range °C	-18/-23
Climate Class	7
Ice Cream Box Volume (lt)	4,8
No of ice cream box	18
Gross/Net Weight (kg)	341/326
Dimensions (WxDxH) (mm)	
Internal	1540X918X225
External	1725x1130x1340
With Packing	1750X1170X1450
Loadability (pc)	
20ft DC	5
40ft DC	10
80 m³ Truck	11
Input Power (W)	2800/1250
Energy Cons. (kWh/24h)	27/19
Type of cooling	Electronic
Power supply (V/Hz)	230/50
Refrigerant	R404A/R290
Noise Level (dB(A))	55



UDR 5 SCE

Temperature Range °C	-18/-23
Climate Class	7
Ice Cream Box Volume (lt)	5
No of ice cream box	5
Gross/Net Weight (kg)	85/71
Dimensions (WxDxH) (mm)	
Internal	890x510x708/610
External	1009x615x832/712
With Packing	1040x680x890
Loadability (pc)	
20ft DC	32
40ft DC	68
80 m³ Truck	114
Input Power (W)	220/157
Energy Cons. (kWh/24h)	2,9/2,23
Type of cooling	Mechanical
Power supply (V/Hz)	230/50
Refrigerant	R404A/R290
Noise Level (dB(A))	52,3



UDR 7 SCE

Temperature Range °C	-18/-23
Climate Class	7
Ice Cream Box Volume (lt)	4,8
No of ice cream box	7
Gross/Net Weight (kg)	81/65
Dimensions (WxDxH) (mm)	
Internal	1180x500x708/610
External	1298x615x832/712
With Packing	1330x680x890
Loadability (pc)	
20ft DC	24
40ft DC	50
80 m³ Truck	90
Input Power (W)	300/168
Energy Cons. (kWh/24h)	4,9/2,64
Type of cooling	Mechanical
Power supply (V/Hz)	230/50
Refrigerant	R404A/R290
Noise Level (dB(A))	53,8

ICE CREAM SHOWCASES



UDR 8 SCE

Temperature Range °C	-18/-23
Climate Class	7
Ice Cream Box Volume (lt)	4,8
No of ice cream box	8
Gross/Net Weight (kg)	102/85
Dimensions (WxDxH) (mm)	
Internal	1430x495x708/610
External	1548x615x949/829
With Packing	1640x7680x890
Loadability (pc)	
20ft DC	20
40ft DC	42
80 m³ Truck	52
Input Power (W)	400
Energy Cons. (kWh/24h)	6,4/
Type of cooling	Mechanical
Power supply (V/Hz)	230/50
Refrigerant	R404A/R290
Noise Level (dB(A))	53,8



UDR 10 SCE

Temperature Range °C	-18/-23
Climate Class	7
Ice Cream Box Volume (lt)	5
No of ice cream box	10
Gross/Net Weight (kg)	113/93
Dimensions (WxDxH) (mm)	
Internal	895x790x710/602
External	1013x900x832/707
With Packing	1110x980x1365
Loadability (pc)	
20ft DC	10
40ft DC	24
80 m³ Truck	52
Input Power (W)	220
Energy Cons. (kWh/24h)	3,6
Type of cooling	Mechanical
Power supply (V/Hz)	230/50
Refrigerant	R290
Noise Level (dB(A))	54



UDR 14 ANKA

Temperature Range °C	-18/-23
Climate Class	7
Ice Cream Box Volume (lt)	5
No of ice cream box	14
Gross/Net Weight (kg)	203/188
Dimensions (WxDxH) (mm)	
Internal	1230x790x710/602
External	1390x1115x1210
With Packing	1475x1250x1290
Loadability (pc)	
20ft DC	4
40ft DC	9
80 m³ Truck	20
Input Power (W)	430/345
Energy Cons. (kWh/24h)	8,3/5,9
Type of cooling	Mechanical
Power supply (V/Hz)	230/50
Refrigerant	R404A/R290
Noise Level (dB(A))	55

COLD BEVERAGE DISPENSERS

COLD BEVERAGE DISPENSERS



USM 10

Temperature Range °C	+5/+10
Climate Class	4
Gross/Net Volume (lt)	11/10
Gross/Net Weight (kg)	23/21,5
POWER (W)	350
Dimensions (WxDxH) (mm)	
External	180x500x580
With Packing	280x580x650
Loadability (pc)	
20ft DC	252
40ft DC	504
80 m ³ Truck	576
Power Supply	230/50
Energy Cons. (kWh/24h)	4
Refrigerant	R134a



USM 20 A

Temperature Range °C	+5/+10
Climate Class	4
Gross/Net Volume (lt)	22/20
Gross/Net Weight (kg)	24/22
POWER (W)	400
Dimensions (WxDxH) (mm)	
External	180x500x705
With Packing	280x580x780
Loadability (pc)	
20ft DC	252
40ft DC	504
80 m ³ Truck	576
Power Supply	230/50
Energy Cons. (kWh/24h)	4,2
Refrigerant	R134a



USM 20

Temperature Range °C	+5/+10
Climate Class	4
Gross/Net Volume (lt)	22/20
Gross/Net Weight (kg)	25/23
POWER (W)	400
Dimensions (WxDxH) (mm)	
External	180x500x705
With Packing	280x580x780
Loadability (pc)	
20ft DC	252
40ft DC	504
80 m ³ Truck	576
Power Supply	230/50
Energy Cons. (kWh/24h)	4,3
Refrigerant	R134a

COLD BEVERAGE DISPENSERS



USM 4x20 A

Temperature Range °C	+5/+10
Climate Class	4
Gross/Net Volume (lt)	88/80
Gross/Net Weight (kg)	55/51
POWER (W)	600
Dimensions (WxDxH) (mm)	
External	720x500x705
With Packing	820x580x780
Loadability (pc)	
20ft DC	84
40ft DC	168
80 m ³ Truck	192
Power Supply	230/50
Energy Cons. (kWh/24h)	8,8
Refrigerant	R134a



USM 10+10 S/A

Temperature Range °C	+5/+10
Climate Class	4
Gross/Net Volume (lt)	22/20
Gross/Net Weight (kg)	32/30
POWER (W)	400
Dimensions (WxDxH) (mm)	
External	360x500x580
With Packing	460x580x650
Loadability (pc)	
20ft DC	150
40ft DC	312
80 m ³ Truck	345
Power Supply	230/50
Energy Cons. (kWh/24h)	4,5
Refrigerant	R134a



USM 20+10 S/A

Temperature Range °C	+5/+10
Climate Class	4
Gross/Net Volume (lt)	33/30
Gross/Net Weight (kg)	42/39,5
POWER (W)	500
Dimensions (WxDxH) (mm)	
External	540x500x580
With Packing	640x580x650
Loadability (pc)	
20ft DC	108
40ft DC	216
80 m ³ Truck	252
Power Supply	230/50
Energy Cons. (kWh/24h)	5,9
Refrigerant	R134a

COLD BEVERAGE DISPENSERS



USM 20+20 S/A

Temperature Range °C	+5/+10
Climate Class	4
Gross/Net Volume (lt)	44/40
Gross/Net Weight (kg)	34/32,5
POWER (W)	550
Dimensions (WxDxH) (mm)	
External	360x500x705
With Packing	460x580x780
Loadability (pc)	
20ft DC	108
40ft DC	216
80 m³ Truck	252
Power Supply	230/50
Energy Cons. (kWh/24h)	5,9
Refrigerant	R134a



USM 40+20 S/A

Temperature Range °C	+5/+10
Climate Class	4
Gross/Net Volume (lt)	66/60
Gross/Net Weight (kg)	46/43
POWER (W)	600
Dimensions (WxDxH) (mm)	
External	540x500x705
With Packing	640x580x780
Loadability (pc)	
20ft DC	108
40ft DC	216
80 m³ Truck	252
Power Supply	230/50
Energy Cons. (kWh/24h)	8,1
Refrigerant	R134a



USM 19

Temperature Range °C	+5/+10
Climate Class	4
Gross/Net Volume (lt)	20/19
Gross/Net Weight (kg)	20/18
POWER (W)	382,2
Dimensions (WxDxH) (mm)	
External	352x402x720
With Packing	390x480x780
Loadability (pc)	
20ft DC	216
40ft DC	450
80 m³ Truck	510
Power Supply	230/50
Energy Cons. (kWh/24h)	1,859
Refrigerant	R134a

PASTRY DISPLAY CABINETS

PASTRY DISPLAY CABINETS



UPR 1

Temperature Range °C	+1/+10
Climate Class	4
Gross/Net Volume (lt)	464/460
Gross/Net Weight (kg)	176/170
Dimensions (WxDxH) (mm)	
External	700x730x1790
With Packing	750x770x1950
Loadability (pc)	
20ft DC	21
40ft DC	48
80 m ³ Truck	54
Shelves/Baskets (pcs)	5
Energy Cons. (kWh/24h)	12,3
Type of cooling	Mechanical
Power supply (V/Hz)	230/50
Refrigerant	R134a



UPR 2

Temperature Range °C	+1/+10
Climate Class	4
Gross/Net Volume (lt)	953/946
Gross/Net Weight (kg)	320/310
Dimensions (WxDxH) (mm)	
External	1380x730x1790
With Packing	1430x770x1950
Loadability (pc)	
20ft DC	12
40ft DC	24
80 m ³ Truck	27
Shelves/Baskets (pcs)	5x2
Energy Cons. (kWh/24h)	18,5
Type of cooling	Mechanical
Power supply (V/Hz)	230/50
Refrigerant	R134a

PASTRY DISPLAY CABINETS



UPR 3

Temperature Range °C	+1/+10
Climate Class	4
Gross/Net Volume (lt)	1422/1413
Gross/Net Weight (kg)	385/370
Dimensions (WxDxH) (mm)	
External	2010x700x1790
With Packing	2060x770x1950
Loadability (pc)	
20ft DC	8
40ft DC	17
80 m³ Truck	19
Shelves/Baskets (pcs)	10+5
Energy Cons. (kWh/24h)	24
Type of cooling	Mechanical
Power supply (V/Hz)	230/50
Refrigerant	R134a



UPR 1 A

Temperature Range °C	+1/+10
Climate Class	4
Gross/Net Volume (lt)	575/460
Gross/Net Weight (kg)	215/205
Dimensions (WxDxH) (mm)	
External	775x805x1785
With Packing	920x950x2050
Loadability (pc)	
20ft DC	12
40ft DC	26
80 m³ Truck	28
Shelves/Baskets (pcs)	5
Energy Cons. (kWh/24h)	12,3
Type of cooling	Mechanical
Power supply (V/Hz)	230/50
Refrigerant	R134a

ICE MACHINES

ICE MACHINES



UBM 20

Ice Making Capacity (kg/24h)	20
Ice Capacity For One Cyle (pcs)	12
Weight Of Ice (g)	123-170
Ice Storage Capacity (kg)	1,2
Gross/Net Weight[kg]	18,4/16,7
Dimensions [W*D*H] [mm]	
External	380x435x431
With Packing	420x485x472
Loadability [pcs]	
20'ft Dc	256
40'ft Dc	528
80 m ³ Truck	
Energy Cons. (kWh/24h)	3,4
Refrigerant (Std/opt)	R134a



UBM 30

Ice Making Capacity (kg/24h)	32
Ice Capacity For One Cyle (pcs)	24
Weight Of Ice (g)	20-25
Ice Storage Capacity (kg)	10-12
Gross/Net Weight[kg]	48/46
Dimensions [W*D*H] [mm]	
External	520x625x660
With Packing	550x645x695
Loadability [pcs]	
20'ft Dc	72
40'ft Dc	144
80 m ³ Truck	180
Energy Cons. (kWh/24h)	10,8
Refrigerant (Std/opt)	R134a

ICE MACHINES



UBM 60

Ice Making Capacity (kg/24h)	48
Ice Capacity For One Cycle (pcs)	32
Weight Of Ice (g)	20-25
Ice Storage Capacity (kg)	20-24
Gross/Net Weight[kg]	65/63
Dimensions [W*D*H] [mm]	
External	600x565x880
With Packing	615x590x910
Loadability [pcs]	
20'ft Dc	60
40'ft Dc	120
80 m ³ Truck	180
Energy Cons. (kWh/24h)	14,5
Refrigerant (Std/opt)	R134a



UBM 100

Ice Making Capacity (kg/24h)	70
Ice Capacity For One Cycle (pcs)	40
Weight Of Ice (g)	20-25
Ice Storage Capacity (kg)	35-40
Gross/Net Weight[kg]	74-71
Dimensions [W*D*H] [mm]	
External	680x560x1130
With Packing	700x600x1170
Loadability [pcs]	
20'ft Dc	48
40'ft Dc	102
80 m ³ Truck	152
Energy Cons. (kWh/24h)	17,2
Refrigerant (Std/opt)	R134a

WATER DISPENSER

WATER DISPENSER



USP 85

Temperature Range [°C]	+5/+10
Climate Class	4
Hot water tank volume (lt)	/
Cold water tank volume (lt)	72
Heating capacity (lt/h)	/
Cooling capacity (lt/h)	/
Gross/net Weight [kg]	56/52
Dimensions [W*D*H] [mm]	
External	600x415x1385
With Packing	640x480x1420
Loadability [pcs]	
20'ft Dc	36
40'ft Dc	75
80 m³ Truck	105
Power supply [V/Hz]	230/50
Refrigerant (Std/opt)	R134a



Архангельск (8182)63-90-72
Астана (7172)727-132
Астрахань (8512)99-46-04
Барнаул (3852)73-04-60
Белгород (4722)40-23-64
Брянск (4832)59-03-52
Владивосток (423)249-28-31
Волгоград (844)278-03-48
Вологда (8172)26-41-59
Воронеж (473)204-51-73
Екатеринбург (343)384-55-89
Иваново (4932)77-34-06
Ижевск (3412)26-03-58
Иркутск (395)279-98-46
Казань (843)206-01-48
Калининград (4012)72-03-81
Калуга (4842)92-23-67
Кемерово (3842)65-04-62
Киров (8332)68-02-04
Краснодар (861)203-40-90
Красноярск (391)204-63-61
Курск (4712)77-13-04
Липецк (4742)52-20-81
Магнитогорск (3519)55-03-13
Москва (495)268-04-70
Мурманск (8152)59-64-93
Набережные Челны (8552)20-53-41
Нижний Новгород (831)429-08-12
Новокузнецк (3843)20-46-81
Новосибирск (383)227-86-73
Омск (3812)21-46-40
Орел (4862)44-53-42
Оренбург (3532)37-68-04
Пенза (8412)22-31-16
Пермь (342)205-81-47
Ростов-на-Дону (863)308-18-15
Рязань (4912)46-61-64
Самара (846)206-03-16
Санкт-Петербург (812)309-46-40
Саратов (845)249-38-78
Севастополь (8692)22-31-93
Симферополь (3652)67-13-56
Смоленск (4812)29-41-54
Сочи (862)225-72-31
Ставрополь (8652)20-65-13
Сургут (3462)77-98-35
Тверь (4822)63-31-35
Томск (3822)98-41-53
Тула (4872)74-02-29
Тюмень (3452)66-21-18
Ульяновск (8422)24-23-59
Уфа (347)229-48-12
Хабаровск (4212)92-98-04
Челябинск (351)202-03-61
Череповец (8202)49-02-64
Ярославль (4852)69-52-93
Киргизия (996)312-96-26-47
Казахстан (772)734-952-31
Таджикистан (992)427-82-92-69

Единый адрес для всех регионов: www.ugur.nt-rt.ru || urg@nt-rt.ru